

ASMTL polyclonal antibody

Catalog: BS8652

Host: Rabbit

Reactivity: Human, Mouse

BackGround:

The protein encoded by this gene has an N-terminus that is similar to the multicopy associated filamentation (maf) protein of *Bacillus subtilis* and to orfE of *Escherichia coli*, while the C-terminus is similar to N-acetylserotonin O-methyltransferase. This gene is located in the pseudo-autosomal region 1 (PAR1) of X and Y chromosomes. Three transcript variants encoding different isoforms have been found for this gene.

Product:

1mg/ml in PBS with 0.02% sodium azide, 50% glycerol, pH7.2

Molecular Weight:

72kDa

Swiss-Prot:

O95671

Purification&Purity:

The antibody was affinity-purified from rabbit antiserum by affinity-chromatography using epitope-specific immunogen and the purity is > 95% (by SDS-PAGE).

Applications:

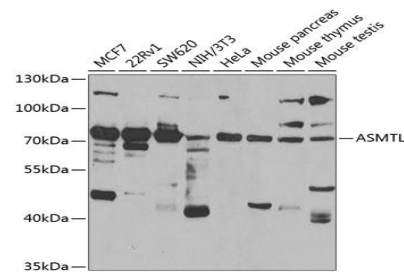
WB, 1:500 - 1:2000 | IP, 1:50 - 1:200

Storage&Stability:

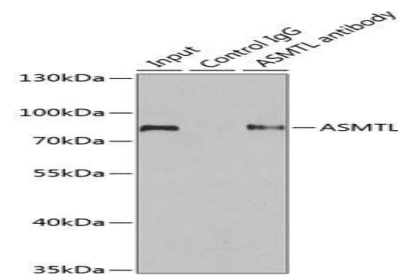
Store at 4 °C short term. Aliquot and store at -20 °C long term. Avoid freeze-thaw cycles.

Category:

Polyclonal Antibodies

DATA:

Western blot analysis of extracts of various cell lines, using ASMTL antibody at 1:1000 dilution. Secondary antibody: HRP Goat Anti-Rabbit IgG at 1:10000 dilution. Lysates/proteins: 25ug per lane. Blocking buffer: 3% nonfat dry milk in TBST.



Immunoprecipitation analysis of 200ug extracts of SW620 cells using 1ug ASMTL antibody. Western blot was performed from the immunoprecipitate using ASMTL antibody at a dilution of 1:500.

Note:

For research use only, not for use in diagnostic procedure.

Bioworld Technology, Inc.

Add: 1660 South Highway 100, Suite 500 St. Louis Park, MN 55416, USA.

Email: info@bioworld.com

Tel: 6123263284

Fax: 6122933841

Bioworld technology, co. Ltd.

Add: No 9, weidi road Qixia District Nanjing, 210046, P. R. China.

Email: info@biogot.com

Tel: 0086-025-68037686

Fax: 0086-025-68035151