

EIF3H polyclonal antibody

Catalog: BS8655

Host: Rabbit

Reactivity: Human, Mouse, Rat

BackGround:

Component of the eukaryotic translation initiation factor 3 (eIF-3 complex, which is required for several steps in the initiation of protein synthesis. The eIF-3 complex associates with the 40S ribosome and facilitates the recruitment of eIF-1, eIF-1A, eIF-2:GTP:methionyl-tRNA_i and eIF-5 to form the 43S pre-initiation complex (43S PIC). The eIF-3 complex stimulates mRNA recruitment to the 43S PIC and scanning of the mRNA for AUG recognition. The eIF-3 complex is also required for disassembly and recycling of post-termination ribosomal complexes and subsequently prevents premature joining of the 40S and 60S ribosomal subunits prior to initiation. The eIF-3 complex specifically targets and initiates translation of a subset of mRNAs involved in cell proliferation, including cell cycling, differentiation and apoptosis, and uses different modes of RNA stem-loop binding to exert either translational activation or repression.

Product:

Rabbit IgG, 1mg/ml in PBS with 0.02% sodium azide, 50% glycerol, pH7.2.

Molecular Weight:

40kDa

Swiss-Prot:

O15372

Purification&Purity:

The antibody was affinity-purified from rabbit antiserum by affinity-chromatography using epitope-specific immunogen and the purity is > 95% (by SDS-PAGE).

Applications:

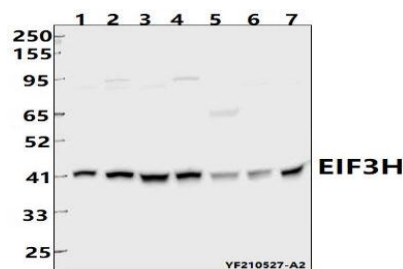
WB,1:500 - 1:2000|IHC,1:50 - 1:200|IP,1:50 - 1:200|IF,1:50 - 1:200

Storage&Stability:

Store at 4 °C short term. Aliquot and store at -20 °C long term. Avoid freeze-thaw cycles.

Specificity:

EIF3H polyclonal antibody detects endogenous levels of EIF3H protein.

DATA:

Western blot (WB) analysis of EIF3H pAb at 1:5000 dilution

Lane1:EC9706 whole cell lysate(40ug)

Lane2:PC3 whole cell lysate(40ug)

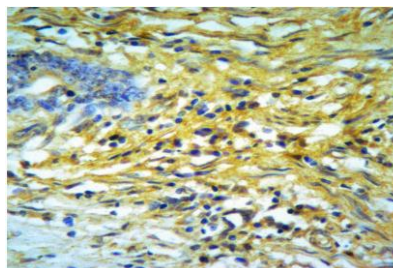
Lane3:Jurkat whole cell lysate(40ug)

Lane4:The Pancreas tissue lysate of Mouse(40ug)

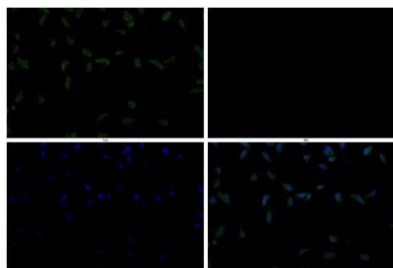
Lane5:The Thymus tissue lysate of Rat(40ug)

Lane6:PC12 whole cell lysate(40ug)

Lane7:RAW264.7 whole cell lysate(40ug)



Immunohistochemical analysis of EIF3H staining in human colorectal cancer formalin fixed paraffin embedded tissue section.



Immunofluorescence analysis of PC3 cells using EIF3H pAb at dilution of 1:50.

Bioworld Technology, Inc.

Add: 1660 South Highway 100, Suite 500 St. Louis Park, MN 55416, USA.

Email: info@bioworld.com

Tel: 6123263284

Fax: 6122933841

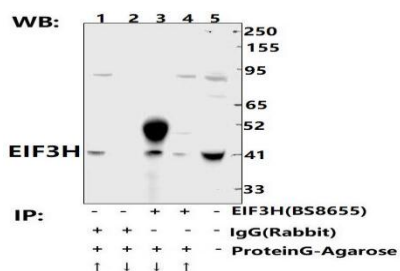
Bioworld technology, co. Ltd.

Add: No 9, weidi road Qixia District Nanjing, 210046, P. R. China.

Email: info@biogot.com

Tel: 0086-025-68037686

Fax: 0086-025-68035151


Note:

For research use only, not for use in diagnostic procedure.

Immunoprecipitation of Jurkat cell lysates using EIF3H pAb (Sepharose Bead Conjugate)#BD0048 (lane 3 and lane 4) and Nonspecific IgG Control (Sepharose Bead Conjugate)#BD0048 (lane 1 and lane 2) .Lane 1 is 30% input. The western blot was probed using EIF3H pAb.

Bioworld Technology, Inc.

Add: 1660 South Highway 100, Suite 500 St. Louis Park, MN 55416, USA.

 Email: info@bioworld.com

Tel: 6123263284

Fax: 6122933841

Bioworld technology, co. Ltd.

Add: No 9, weidi road Qixia District Nanjing, 210046, P. R. China.

 Email: info@biogot.com

Tel: 0086-025-68037686

Fax: 0086-025-68035151