

TUSC2 polyclonal antibody

Catalog: BS8691

Host: Rabbit

Reactivity: Human, Mouse, Rat

BackGround:

TUSC2 (tumor suppressor candidate 2), also known as FUS1, LGCC or PDAP2, is a 110 amino acid protein that is expressed at high levels in kidney, pancreas, lung, heart and skeletal muscle where it is thought to function as a tumor suppressor. More specifically, TUSC2 inhibits invasive colony formation by inducing G1 cell cycle arrest and ultimately causing apoptosis, thereby preventing tumor growth. The gene encoding TUSC2 maps to human chromosome 3, which houses over 1,100 genes, including a chemokine receptor (CKR) gene cluster and a variety of human cancer-related gene loci. Key tumor suppressing genes on chromosome 3 include those that encode the apoptosis mediator RASSF1, the cell migration regulator HYAL1 and the angiogenesis suppressor SEMA3B.

Product:

Rabbit IgG, 1mg/ml in PBS with 0.02% sodium azide, 50% glycerol, pH7.2

Molecular Weight:

~ 12kDa

Swiss-Prot:

O75896

Purification&Purity:

The antibody was affinity-purified from rabbit antiserum by affinity-chromatography using epitope-specific immunogen and the purity is > 95% (by SDS-PAGE).

Applications:

WB: 1:500~1:2000

IHC: 1:50~1:200

IF: 1:50~1:200

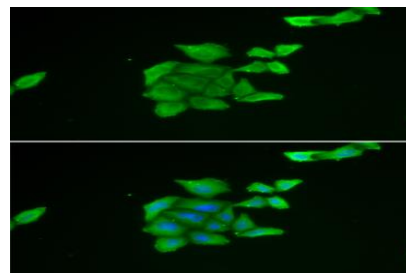
Storage&Stability:

Store at 4 °C short term. Aliquot and store at -20 °C long term. Avoid freeze-thaw cycles.

Specificity:

TUSC2 polyclonal antibody detects endogenous levels of TUSC2 protein.

DATA:



Immunofluorescence analysis of U2OS cell using TUSC2 antibody.

Blue: DAPI for nuclear staining.

Note:

For research use only, not for use in diagnostic procedure.

Bioworld Technology, Inc.

Add: 1660 South Highway 100, Suite 500 St. Louis Park, MN 55416, USA.

Email: info@bioworld.com

Tel: 6123263284

Fax: 6122933841

Bioworld technology, co. Ltd.

Add: No 9, weidi road Qixia District Nanjing, 210046, P. R. China.

Email: info@biogot.com

Tel: 0086-025-68037686

Fax: 0086-025-68035151