

TGM1 polyclonal antibody

Catalog: BS8847

Host: Rabbit

Reactivity: Human,Rat

BackGround:

The protein encoded by this gene is a membrane protein that catalyzes the addition of an alkyl group from an alkylamine to a glutamine residue of a protein, forming an alkylglutamine in the protein. This protein alkylation leads to crosslinking of proteins and catenation of polyamines to proteins. This gene contains either one or two copies of a 22 nt repeat unit in its 3' UTR. Mutations in this gene have been associated with autosomal recessive lamellar ichthyosis (LI) and nonbullous congenital ichthyosiform erythroderma (NCIE).

Product:

Rabbit IgG, 1mg/ml in PBS with 0.02% sodium azide, 50% glycerol, pH7.2

Molecular Weight:

~ 90kDa

Swiss-Prot:

P22735

Purification&Purity:

The antibody was affinity-purified from rabbit antiserum by affinity-chromatography using epitope-specific immunogen and the purity is > 95% (by SDS-PAGE).

Applications:

WB: 1:500~1:2000

IHC: 1:50~1:200

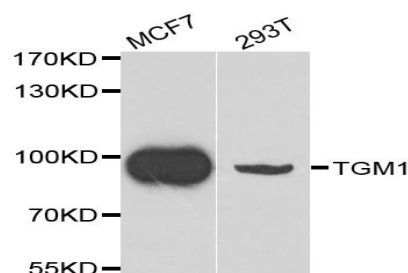
Storage&Stability:

Store at 4 °C short term. Aliquot and store at -20 °C long term. Avoid freeze-thaw cycles.

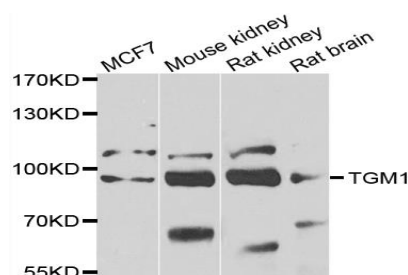
Specificity:

TGM1 polyclonal antibody detects endogenous levels of TGM1 protein.

DATA:



Western blot analysis of extracts of various cell lines, using TGM1 antibody.



Western blot analysis of extracts of various cell lines, using TGM1 antibody.

Note:

For research use only, not for use in diagnostic procedure.

Bioworld Technology, Inc.

Add: 1660 South Highway 100, Suite 500 St. Louis Park, MN 55416, USA.

Email: info@bioworld.com

Tel: 6123263284

Fax: 6122933841

Bioworld technology, co. Ltd.

Add: No 9, weidi road Qixia District Nanjing, 210046, P. R. China.

Email: info@biogot.com

Tel: 0086-025-68037686

Fax: 0086-025-68035151