

GLK polyclonal antibody

Catalog: BS8854

Host: Rabbit

Reactivity: Human, Mouse, Rat

Background:

Several mammalian kinases have been identified which exhibit sequence similarity to the *Saccharomyces cerevisiae* serine/threonine kinase STE20. STE20 is involved in relaying signals from G-protein coupled receptors to cytosolic MAP kinase cascades, and it lies upstream of a MAP kinase kinase kinase. Mammalian STE20-like kinases include GLK, KHS, NIK, YSK1, HPK1, Krs-1, Krs-2 and human GC kinase. GLK (for GC-like kinase) is an 885 amino acid protein that shares a high degree of homology with GC kinase and HPK1. Like many of the STE20-like kinases, GLK specifically activates the JNK pathway. Epistasis studies with dominant negative mutants of MEKK1 suggest that GLK functions upstream of MEKK1 in the JNK signaling pathway.

Product:

Rabbit IgG, 1mg/ml in PBS with 0.02% sodium azide, 50% glycerol, pH7.2

Molecular Weight:

~ 110kDa

Swiss-Prot:

Q8IVH8

Purification&Purity:

The antibody was affinity-purified from rabbit antiserum by affinity-chromatography using epitope-specific immunogen and the purity is > 95% (by SDS-PAGE).

Applications:

WB: 1:500~1:2000

IHC: 1:50~1:200

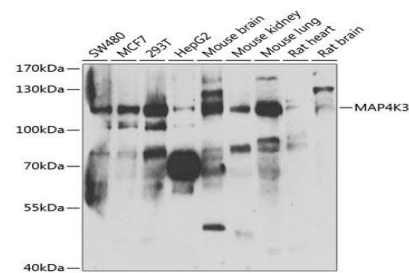
Storage&Stability:

Store at 4 °C short term. Aliquot and store at -20 °C long term. Avoid freeze-thaw cycles.

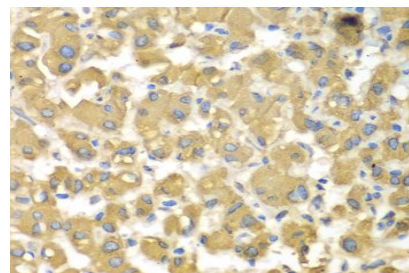
Specificity:

GLK polyclonal antibody detects endogenous levels of GLK protein.

DATA:



Western blot analysis of extracts of various cell lines, using MAP4K3 antibody.



Immunohistochemistry of paraffin-embedded human liver damage using MAP4K3 antibody.

Note:

For research use only, not for use in diagnostic procedure.

Bioworld Technology, Inc.

Add: 1660 South Highway 100, Suite 500 St. Louis Park, MN 55416, USA.

Email: info@bioworld.com

Tel: 6123263284

Fax: 6122933841

Bioworld technology, co. Ltd.

Add: No 9, weidi road Qixia District Nanjing, 210046, P. R. China.

Email: info@biogot.com

Tel: 0086-025-68037686

Fax: 0086-025-68035151