

NAA50 polyclonal antibody

Catalog: BS8874

Host: Rabbit

Reactivity: Human, Mouse, Rat

BackGround:

NAT-13 (N-acetyltransferase 13), also known as NAA50 (N(alpha)-acetyltransferase 50, NatE catalytic subunit), MAK3, NAT5 (N-acetyltransferase 5) or SAN, is a 169 amino acid cytoplasmic protein belonging to the acetyltransferase family and GNAT subfamily. Existing as two alternatively spliced isoforms, NAT-13 interacts with NARG1 and ARD1 as a possible catalytic component of the ARD1-NARG1 complex. NAT-13 is also known to interact with MAK10 and is encoded by a gene that maps to human chromosome 3q13.2.

Product:

Rabbit IgG, 1mg/ml in PBS with 0.02% sodium azide, 50% glycerol, pH7.2

Molecular Weight:

~ 19kDa

Swiss-Prot:

Q9GZZ1

Purification&Purity:

The antibody was affinity-purified from rabbit antiserum by affinity-chromatography using epitope-specific immunogen and the purity is > 95% (by SDS-PAGE).

Applications:

WB: 1:500~1:2000

IHC/IF: 1:50~1:200

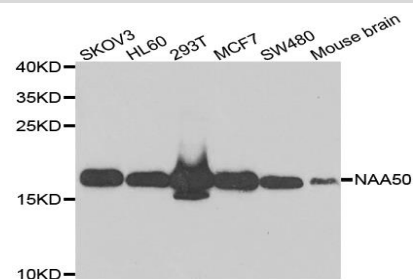
Storage&Stability:

Store at 4 °C short term. Aliquot and store at -20 °C long term. Avoid freeze-thaw cycles.

Specificity:

NAA50 polyclonal antibody detects endogenous levels of NAA50 protein.

DATA:



Western blot analysis of extracts of various cell lines, using NAA50 antibody.

Note:

For research use only, not for use in diagnostic procedure.

Bioworld Technology, Inc.

Add: 1660 South Highway 100, Suite 500 St. Louis Park, MN 55416, USA.

Email: info@bioworld.com

Tel: 6123263284

Fax: 6122933841

Bioworld technology, co. Ltd.

Add: No 9, weidi road Qixia District Nanjing, 210046, P. R. China.

Email: info@biogot.com

Tel: 0086-025-68037686

Fax: 0086-025-68035151