

## ICAM4 polyclonal antibody

Catalog: BS8899

Host: Rabbit

Reactivity: Human, Mouse

### BackGround:

This gene encodes the Landsteiner-Wiener (LW) blood group antigen(s) that belongs to the immunoglobulin (Ig) superfamily, and that shares similarity with the intercellular adhesion molecule (ICAM) protein family. This ICAM protein contains 2 Ig-like C2-type domains and binds to the leukocyte adhesion LFA-1 protein. The molecular basis of the LW(A)/LW(B) blood group antigens is a single aa variation at position 100; Gln-100=LW(A) and Arg-100=LW(B). Alternative splicing results in multiple transcript variants encoding distinct isoforms.

### Product:

0.01M TBS(pH7.4) with 1% BSA, 0.03% Proclin300 and 50% Glycerol.

### Molecular Weight:

~ 45 kDa

### Swiss-Prot:

Q14773

### Purification&Purity:

The antibody was affinity-purified from rabbit antiserum by affinity-chromatography using epitope-specific immunogen and the purity is > 95% (by SDS-PAGE).

### Applications:

WB: 1:500~1:2000

IHC: 1:100~1:500

IF: 1:100~1:500

ELISA: 1:5000~1:10000

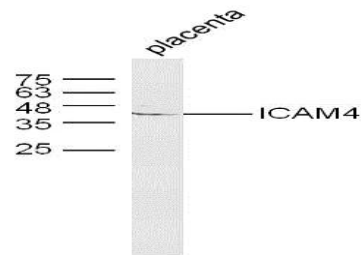
### Storage&Stability:

Store at 4 °C short term. Aliquot and store at -20 °C long term. Avoid freeze-thaw cycles.

### Specificity:

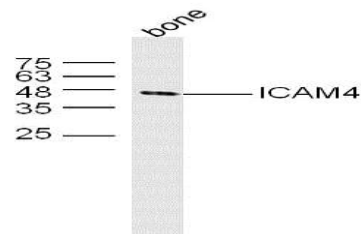
ICAM4 polyclonal antibody detects endogenous levels of ICAM4 protein.

### DATA:



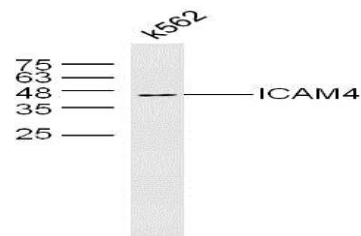
Sample: placenta(Mouse) Lysate at 40 ug

Primary: Anti-ICAM4 at 1/300 dilution



Sample: Bone (Mouse) Lysate at 40 ug

Primary: Anti-ICAM4 at 1/300 dilution



Sample: K562 Cell (Human) Lysate at 40 ug

Primary: Anti-ICAM4 at 1/300 dilution

### Note:

For research use only, not for use in diagnostic procedure.

### Bioworld Technology, Inc.

Add: 1660 South Highway 100, Suite 500 St. Louis Park, MN 55416, USA.

Email: [info@bioworld.com](mailto:info@bioworld.com)

Tel: 6123263284

Fax: 6122933841

### Bioworld technology, co. Ltd.

Add: No 9, weidi road Qixia District Nanjing, 210046, P. R. China.

Email: [info@biogot.com](mailto:info@biogot.com)

Tel: 0086-025-68037686

Fax: 0086-025-68035151