

NR2E1 polyclonal antibody

Catalog: BS8915

Host: Rabbit

Reactivity: Human, Mouse, Rat

BackGround:

NR2 proteins are a large family of nuclear hormone receptor transcription factors. The proteins belonging to this family are characterized by discrete domains functioning in DNA and ligand binding. NR2E1 (nuclear receptor subfamily 2, group E, member 1), also known as TLX, is an essential component in the formation of synaptic plasticity and dendritic structure in retinal astrocytes. In addition, NR2E1 is a orphan receptor that binds DNA as part of the hormone response element (HRE), a transcription regulator for hormones. DNA-binding orphan receptors have the conserved sequence 5'-AAGGTCA-3', a motif that determines substrate binding specificity. NR2E1 is expressed in brain tissue, with highest levels in astrocytes, and is localized to the nucleus.

Product:

Rabbit IgG, 1mg/ml in PBS with 0.02% sodium azide, 50% glycerol, pH7.2

Molecular Weight:

~ 43kDa

Swiss-Prot:

Q9Y466

Purification&Purity:

The antibody was affinity-purified from rabbit antiserum by affinity-chromatography using epitope-specific immunogen and the purity is > 95% (by SDS-PAGE).

Applications:

WB 1:500 - 1:2000

IF 1:50 - 1:100

IP 1:50 - 1:100

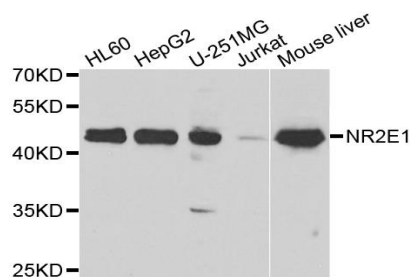
Storage&Stability:

Store at 4 °C short term. Aliquot and store at -20 °C long term. Avoid freeze-thaw cycles.

Specificity:

NR2E1 polyclonal antibody detects endogenous levels of NR2E1 protein.

DATA:



Western blot analysis of extracts of various cell lines, using NR2E1 antibody.

Note:

For research use only, not for use in diagnostic procedure.

Bioworld Technology, Inc.

Add: 1660 South Highway 100, Suite 500 St. Louis Park, MN 55416, USA.

Email: info@bioworld.com

Tel: 6123263284

Fax: 6122933841

Bioworld technology, co. Ltd.

Add: No 9, weidi road Qixia District Nanjing, 210046, P. R. China.

Email: info@biogot.com

Tel: 0086-025-68037686

Fax: 0086-025-68035151