

## ACE2 polyclonal antibody

Catalog: BS90021

Host: Rabbit

Reactivity: Human, Mouse, Rat

### BackGround:

Angiotensin-converting enzyme (ACE) is a carboxyl-terminal dipeptidyl exopeptidase that converts angiotensin I to the potent vasopressive hormone, angiotensin II. There are two isoforms of ACE, the pulmonary ACEP and the testicular ACET. ACEP is a glycoprotein expressed in vascular endothelial cells of the lung, liver, adrenal cortex, pancreas, kidney and spleen. The ACET isoform is expressed exclusively in adult testis by developing sperm cells, specifically late pachytene spermatocytes. Additionally, ACE inactivates bradykinin, a vaso-depressor peptide, and is involved in blood pressure regulation and fluid/electrolyte homeostasis. ACE2 is the first known human homolog of ACE. Unlike ACE, which is expressed ubiquitously throughout the vasculature, ACE2 is expressed only in cardiac, renal and testicular cells.

### Product:

Rabbit IgG, 1mg/ml in PBS with 0.02% sodium azide, 50% glycerol, pH7.2

### Molecular Weight:

92 kDa

### Swiss-Prot:

Q9BYF1(Human) Q8R0I0(Mouse) Q5EGZ1(Rat)

### Purification&Purity:

ProA affinity purified

### Applications:

WB:1:1,000-1:5,000

ICC:1:100-1:500

IHC:1:50-1:200

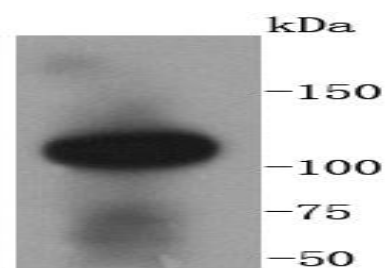
### Storage&Stability:

Store at +4 °C after thawing. Aliquot store at -20 °C or -80 °C. Avoid repeated freeze / thaw cycles.

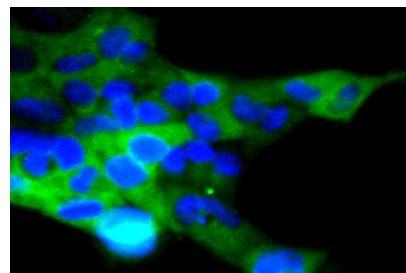
### Specificity:

ACE2 polyclonal antibody detects endogenous levels of ACE2 protein.

### DATA:



Western blot analysis of ACE2 on human kidney lysates using anti-ACE2 antibody at 1/1,000 dilution.



ICC staining ACE2 in 293 cells (green). The nuclear counter stain is DAPI (blue). Cells were fixed in paraformaldehyde, permeabilised with 0.25% Triton X100/PBS.

### Note:

For research use only, not for use in diagnostic procedure.

### Bioworld Technology, Inc.

Add: 1660 South Highway 100, Suite 500 St. Louis Park, MN 55416, USA.

Email: [info@bioworld.com](mailto:info@bioworld.com)

Tel: 6123263284

Fax: 6122933841

### Bioworld technology, co. Ltd.

Add: No 9, weidi road Qixia District Nanjing, 210046, P. R. China.

Email: [info@biogot.com](mailto:info@biogot.com)

Tel: 0086-025-68037686

Fax: 0086-025-68035151