

Aconitase 2 polyclonal antibody

Catalog: BS90022

Host: Rabbit

Reactivity: Human, Mouse, Rat

BackGround:

Aconitase 2, mitochondrial is a protein that in humans is encoded by the ACO2 gene. The protein encoded by this gene belongs to the aconitase/IPM isomerase family. It is an enzyme that catalyzes the interconversion of citrate to isocitrate via cis-aconitate in the second step of the TCA cycle. This protein is encoded in the nucleus and functions in the mitochondrion. It was found to be one of the mitochondrial matrix proteins that are preferentially degraded by the serine protease 15 (PRSS15), also known as Lon protease, after oxidative modification.

Product:

Rabbit IgG, 1mg/ml in PBS with 0.02% sodium azide, 50% glycerol, pH7.2

Molecular Weight:

85 kDa

Swiss-Prot:

Q99798(Human) Q99KI0(Mouse) Q9ER34(Rat)

Purification&Purity:

ProA affinity purified

Applications:

WB:1:500-1:2,000

ICC:1:50-1:200

IHC:1:50-1:200

IP:1:10-1:50

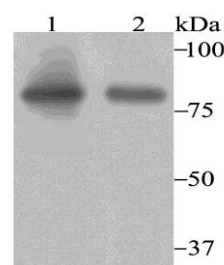
Storage&Stability:

Store at +4 °C after thawing. Aliquot store at -20 °C. Avoid repeated freeze / thaw cycles.

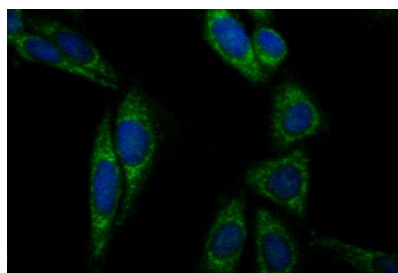
Specificity:

Aconitase 2 polyclonal antibody detects endogenous levels of Aconitase 2 protein.

DATA:



Western blot analysis of Aconitase 2 on SiHa (1) and HL-60 (2) cell lysate using anti-Aconitase 2 antibody at 1/2,000 dilution.



ICC staining Aconitase 2 in SiHa cells (green). The nuclear counter stain is DAPI (blue). Cells were fixed in paraformaldehyde, permeabilised with 0.25% Triton X100/PBS.

Note:

For research use only, not for use in diagnostic procedure.

Bioworld Technology, Inc.

Add: 1660 South Highway 100, Suite 500 St. Louis Park, MN 55416, USA.

Email: info@bioworld.com

Tel: 6123263284

Fax: 6122933841

Bioworld technology, co. Ltd.

Add: No 9, weidi road Qixia District Nanjing, 210046, P. R. China.

Email: info@biogot.com

Tel: 0086-025-68037686

Fax: 0086-025-68035151