

ACTL6A polyclonal antibody

Catalog: BS90026

Host: Rabbit

Reactivity: Human, Mouse

BackGround:

ACTL6A also named BAF53. The SWI/SNF complex regulates gene expression via ATP-dependent chromatin remodeling. Brm (SNF2-a), Brg-1 (SNF2-b), Ini1 (integrase interactor 1, SNF5), BAF53 (ARPN β), BAF57, BAF155 (SRG3), and BAF170 make up the functional core. BAF53 homologues from yeast to humans contain a conserved N-terminal motif, which contains residues at serine 2 and tyrosine 6, which play important roles in BAF53 activity. The BAF53 protein shuttles between the nucleus and cytoplasm. BAF53 also forms a complex with TIP49 and TIP48, which mediates c-Myc oncogenic activity.

Product:

Rabbit IgG, 1mg/ml in PBS with 0.02% sodium azide, 50% glycerol, pH7.2

Molecular Weight:

47 kDa

Swiss-Prot:

O96019(Human) Q9Z2N8(Mouse)

Purification&Purity:

ProA affinity purified

Applications:

WB:1:500-1:2,000

ICC/IF:1:50-1:100

IHC:1:50-1:100

IP:1:10-1:50

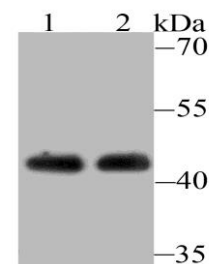
Storage&Stability:

Store at +4 °C after thawing. Aliquot store at -20 °C or -80 °C. Avoid repeated freeze / thaw cycles.

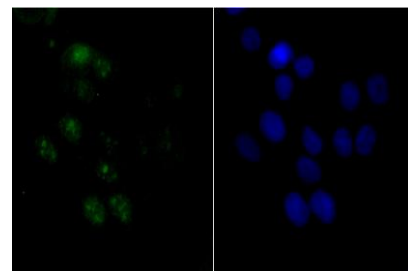
Specificity:

ACTL6A polyclonal antibody detects endogenous levels of ACTL6A protein.

DATA:



Western blot analysis of ACTL6A on Jurkat cell(1) and mouse brain tissue(2) lysate using anti-ACTL6A antibody at 1/500 dilution.



ICC staining ACTL6A in LOVO cells (green). The nuclear counter stain is DAPI (blue). Cells were fixed in paraformaldehyde, permeabilised with 0.25% Triton X100/PBS.

Note:

For research use only, not for use in diagnostic procedure.

Bioworld Technology, Inc.

Add: 1660 South Highway 100, Suite 500 St. Louis Park, MN 55416, USA.

Email: info@bioworld.com

Tel: 6123263284

Fax: 6122933841

Bioworld technology, co. Ltd.

Add: No 9, weidi road Qixia District Nanjing, 210046, P. R. China.

Email: info@biogot.com

Tel: 0086-025-68037686

Fax: 0086-025-68035151