

## ADH1A polyclonal antibody

Catalog: BS90034

Host: Rabbit

Reactivity: Human, Mouse, Rat

### BackGround:

The alcohol dehydrogenase family of proteins metabolize a wide variety of substrates, including ethanol, retinol, other aliphatic alcohols, hydroxysteroids, and lipid peroxidation products. Class I alcohol dehydrogenase, consisting of several homo- and heterodimers of alpha, beta, and gamma subunits, exhibits high activity for ethanol oxidation and plays a major role in ethanol catabolism. Three genes encoding alpha (ADH1A), beta (ADH1B) and gamma (ADH1C) subunits are tandemly organized on chromosome 4q22 as a gene cluster. The alpha form of ADH is monomorphic and predominant in fetal and infant livers, becoming less active in gestation and only weakly active during adulthood. The genes encoding beta and gamma subunits, however, are polymorphic and strongly expressed in adult livers. With the coenzyme NAD, ADH catalyzes the reversible conversion of organic alcohols to ketones or aldehydes. The physiologic function for ADH in the liver is the removal of ethanol formed by microorganisms in the intestinal tract.

### Product:

Rabbit IgG, 1mg/ml in PBS with 0.02% sodium azide, 50% glycerol, pH7.2

### Molecular Weight:

40 kDa

### Swiss-Prot:

P07327(Human) P00329(Mouse) P06757(Rat)

### Purification&Purity:

ProA affinity purified

### Applications:

WB:1:500-1:2,000

ICC:1:50-1:100

IHC:1:50-1:200

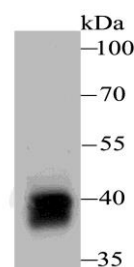
### Storage&Stability:

Store at +4 °C after thawing. Aliquot store at -20 °C. Avoid repeated freeze / thaw cycles.

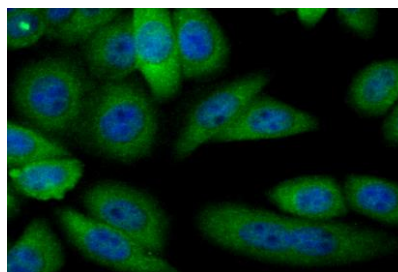
### Specificity:

ADH1A polyclonal antibody detects endogenous levels of ADH1A protein.

### DATA:



Western blot analysis of Alcohol Dehydrogenase on rat liver tissue lysate using anti-Alcohol Dehydrogenase antibody at 1/1,000 dilution.



ICC staining Alcohol Dehydrogenase in HepG2 cells (green). The nuclear counter stain is DAPI (blue). Cells were fixed in paraformaldehyde, permeabilised with 0.25% Triton X100/PBS.

### Note:

For research use only, not for use in diagnostic procedure.

### Bioworld Technology, Inc.

Add: 1660 South Highway 100, Suite 500 St. Louis Park, MN 55416, USA.

Email: [info@bioworld.com](mailto:info@bioworld.com)

Tel: 6123263284

Fax: 6122933841

### Bioworld technology, co. Ltd.

Add: No 9, weidi road Qixia District Nanjing, 210046, P. R. China.

Email: [info@biogot.com](mailto:info@biogot.com)

Tel: 0086-025-68037686

Fax: 0086-025-68035151