

AFP polyclonal antibody

Catalog: BS90036

Host: Rabbit

Reactivity: Human

BackGround:

AFP is a protein normally produced by the fetal liver and is present in the fluid surrounding the fetus (amniotic fluid), and crosses the placenta into the mother's blood. AFP gene expression is regulated by the interactions between steroid hormone receptors and transcriptional factors in separate signal transduction pathways. AFP functions as a binding and transporting ligand and cell growth regulator. Elevated expression level of AFP has been implicated in colorectal, ovarian, pancreatic, testicular, and certain liver cancers. High levels of AFP are also seen in some diseases such as hepatitis and colitis.

Product:

Rabbit IgG, 1mg/ml in PBS with 0.02% sodium azide, 50% glycerol, pH7.2

Molecular Weight:

70 kDa

Swiss-Prot:

P02771

Purification&Purity:

Peptide affinity purified

Applications:

WB:1:1,000-1:2,000

ICC:1:200

IHC:1:200

FC:1:100-1:200

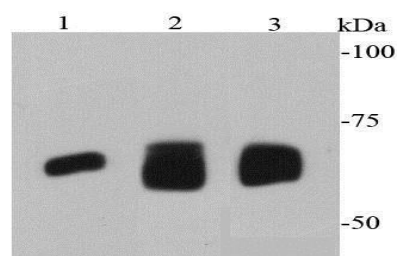
Storage&Stability:

Store at +4 °C after thawing. Aliquot store at -20 °C or -80 °C. Avoid repeated freeze / thaw cycles.

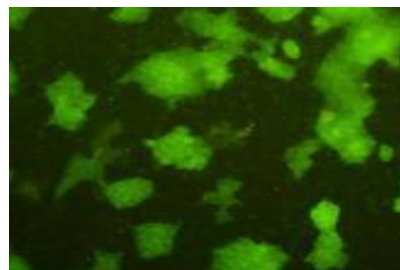
Specificity:

AFP polyclonal antibody detects endogenous levels of AFP protein.

DATA:



Western blot analysis of AFP on different cell lysates using anti-AFP antibody at 1/1000 dilution. Positive control: Lane 1: HepG2 Lane 2: human lung Lane 3: human liver



ICC staining AFP in NCCIT cells (green). Cells were fixed in paraformaldehyde, permeabilised with 0.25% Triton X100/PBS.

Note:

For research use only, not for use in diagnostic procedure.

Bioworld Technology, Inc.

Add: 1660 South Highway 100, Suite 500 St. Louis Park, MN 55416, USA.

Email: info@bioworld.com

Tel: 6123263284

Fax: 6122933841

Bioworld technology, co. Ltd.

Add: No 9, weidi road Qixia District Nanjing, 210046, P. R. China.

Email: info@biogot.com

Tel: 0086-025-68037686

Fax: 0086-025-68035151