

Aggrecan polyclonal antibody

Catalog: BS90037

Host: Rabbit

Reactivity: Human, Rat

BackGround:

The large chondroitin sulfate proteoglycan, aggrecan, is the predominant proteoglycan present in cartilage. Aggrecan is a member of the chondroitin sulphate proteoglycan family, which also includes versican/PG-M, neurocan and brevican. Aggrecan is a complex multidomain macromolecule that undergoes extensive processing and post-translational modification. Aggrecan in cartilage forms aggregates with hyaluronan and link protein, embedded in a collagen network. Aggrecan accounts for the compressive stiffness and resilience of the hyaline cartilage. Many forms of inflammatory arthritis are shown to be accompanied with aggrecan degradation and loss from the cartilage. Brevican is a brain proteoglycan of the aggrecan/versican/neurocan family. In the adult brain, the brevican core protein undergoes proteolytic cleavage and exists as a full-length form a carboxy-terminal fragment and an amino-terminal fragment.

Product:

Rabbit IgG, 1mg/ml in PBS with 0.02% sodium azide, 50% glycerol, pH7.2

Molecular Weight:

250/246/239 kDa

Swiss-Prot:

P16112(Human) P07897(Rat)

Purification&Purity:

ProA affinity purified

Applications:

WB 1:500 - 1:2000

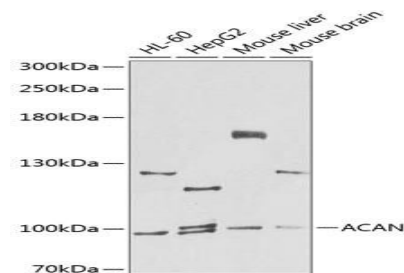
Storage&Stability:

Store at +4 °C after thawing. Aliquot store at -20 °C or -80 °C. Avoid repeated freeze / thaw cycles.

Specificity:

Aggrecan polyclonal antibody detects endogenous levels of Aggrecan protein.

DATA:



Immunohistochemical analysis of paraffin-embedded rat cartilage tissue using anti-Aggrecan antibody. Counter stained with hematoxylin.

Immunohistochemical analysis of paraffin-embedded human liver tissue using anti-Aggrecan antibody. Counter stained with hematoxylin.

Note:

For research use only, not for use in diagnostic procedure.

Bioworld Technology, Inc.

Add: 1660 South Highway 100, Suite 500 St. Louis Park, MN 55416, USA.

Email: info@bioworld.com

Tel: 6123263284

Fax: 6122933841

Bioworld technology, co. Ltd.

Add: No 9, weidi road Qixia District Nanjing, 210046, P. R. China.

Email: info@biogot.com

Tel: 0086-025-68037686

Fax: 0086-025-68035151