

AGR2 polyclonal antibody

Catalog: BS90038

Host: Rabbit

Reactivity: Human

Background:

AGR2 (Anterior Gradient Protein 2), also known as AG2, GOB-4 or HAG-2, is a member of the anterior gradient homolog family. It is the human ortholog of XAG-2, the secreted *Xenopus laevis* Anterior Gradient protein. In *X. laevis*, it is involved in cement gland differentiation and neural marker gene expression. AGR2 is a secretory protein encoded by two different AGR2 transcripts. It interacts with LYPD3 and α -dystroglycan (DAG-1). AGR2 is ubiquitously expressed with up-regulated expression in prostate cancer, breast cancer, lung cancer, renal carcinomas and endometrial carcinomas. AGR2 expression is positively correlated with that of the estrogen receptor (ER) and is negatively correlated with that of the epidermal growth factor receptor (EGFR). AGR2 may serve as a potential therapeutic marker for various cancers.

Product:

Rabbit IgG, 1mg/ml in PBS with 0.02% sodium azide, 50% glycerol, pH7.2

Molecular Weight:

17 kDa

Swiss-Prot:

O95994(Human)

Purification&Purity:

ProA affinity purified

Applications:

WB:1:1,000-1:5,000

ICC:1:100-1:500

IHC:1:50-1:200

FC:1:50-1:100

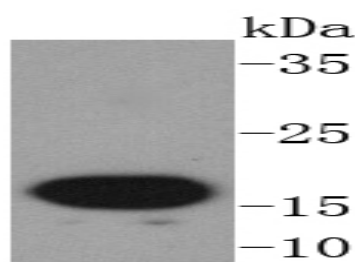
Storage&Stability:

Store at +4 °C after thawing. Aliquot store at -20 °C or -80 °C. Avoid repeated freeze / thaw cycles.

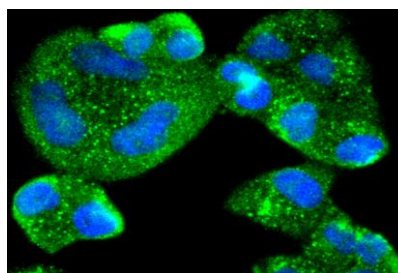
Specificity:

AGR2 polyclonal antibody detects endogenous levels of AGR2 protein.

DATA:



Western blot analysis of AGR2 on MCF-7 cells lysates using anti-AGR2 antibody at 1/1,000 dilution.



ICC staining AGR2 in HeLa cells (green). The nuclear counter stain is DAPI (blue). Cells were fixed in paraformaldehyde, permeabilised with 0.25% Triton X100/PBS.

Note:

For research use only, not for use in diagnostic procedure.

Bioworld Technology, Inc.

Add: 1660 South Highway 100, Suite 500 St. Louis Park, MN 55416, USA.

Email: info@bioworld.com

Tel: 6123263284

Fax: 6122933841

Bioworld technology, co. Ltd.

Add: No 9, weidi road Qixia District Nanjing, 210046, P. R. China.

Email: info@biogot.com

Tel: 0086-025-68037686

Fax: 0086-025-68035151