

ALDH1L1 polyclonal antibody

Catalog: BS90046

Host: Rabbit

Reactivity: Human, Mouse, Rat

BackGround:

10-formyltetrahydrofolate dehydrogenase is an enzyme that in humans is encoded by the ALDH1L1 gene. The protein encoded by this gene catalyzes the conversion of 10-formyltetrahydrofolate, NADP, and water to tetrahydrofolate, NADPH, and carbon dioxide. The encoded protein belongs to the aldehyde dehydrogenase family and is responsible for formate oxidation in vivo. Deficiencies in this gene can result in an accumulation of formate and subsequent methanol poisoning.

Product:

Rabbit IgG, 1mg/ml in PBS with 0.02% sodium azide, 50% glycerol, pH7.2

Molecular Weight:

99 kDa

Swiss-Prot:

O75891(Human) Q8R0Y6(Mouse) P28037(Rat)

Purification&Purity:

ProA affinity purified

Applications:

WB:1:500-2,000

IHC:1:50-1:200

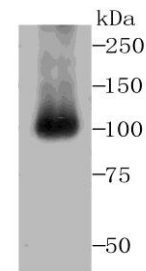
Storage&Stability:

Store at +4 °C after thawing. Aliquot store at -20 °C or -80 °C. Avoid repeated freeze / thaw cycles.

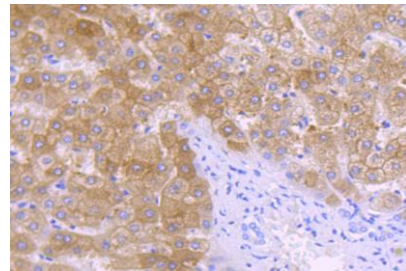
Specificity:

ALDH1L1 polyclonal antibody detects endogenous levels of ALDH1L1 protein.

DATA:



Western blot analysis of ALDH1L1 on mouse liver tissue lysates using anti-ALDH1L1 antibody at 1/500 dilution.



Immunohistochemical analysis of paraffin-embedded human liver tissue using anti-ALDH1L1 antibody. Counter stained with hematoxylin.

Note:

For research use only, not for use in diagnostic procedure.

Bioworld Technology, Inc.

Add: 1660 South Highway 100, Suite 500 St. Louis Park, MN 55416, USA.

Email: info@bioworld.com

Tel: 6123263284

Fax: 6122933841

Bioworld technology, co. Ltd.

Add: No 9, weidi road Qixia District Nanjing, 210046, P. R. China.

Email: info@biogot.com

Tel: 0086-025-68037686

Fax: 0086-025-68035151