

ALIX polyclonal antibody

Catalog: BS90048

Host: Rabbit

Reactivity: Human, Mouse, Rat

Background:

ALG-2-interacting protein (Alix), also designated programmed cell death 6-interacting protein (PDCD6-interacting protein), is a cytoplasmic protein. Alix interacts with apoptosis-associated proteins (ALG-2 and PDCD6) and with the endocytosis-regulator CIN85. Additionally, Alix interacts with the endosomal sorting complexes required for transport (ESCRT) proteins (Tsg101 and CHMP4) and can associate with HIV-1. The endophilins (SH3P4, SH3P8 and SH3P13), enzymes that change curvature of the membrane that are required for early and late steps of coated vesicle formation, also bind to Alix. Alix is involved in the concentration and sorting of cargo proteins of the multivesicular body for incorporation into vesicles.

Product:

Rabbit IgG, 1mg/ml in PBS with 0.02% sodium azide, 50% glycerol, pH7.2

Molecular Weight:

96 kDa

Swiss-Prot:

Q8WUM4(Human) Q9WU78(Mouse) Q9QZA2(Rat)

Purification&Purity:

ProA affinity purified

Applications:

WB:1:500-1:1,000

IHC:1:50-1:200

FC:1:50-1:100

Storage&Stability:

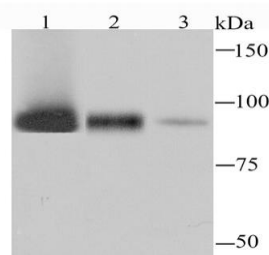
Store at +4 °C after thawing. Aliquot store at -20 °C or

-80 °C. Avoid repeated freeze / thaw cycles.

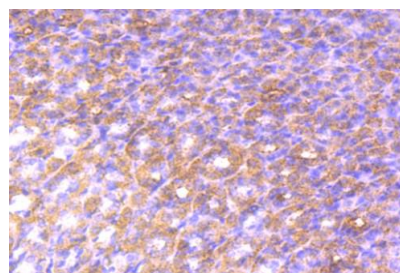
Specificity:

ALIX polyclonal antibody detects endogenous levels of ALIX protein.

DATA:



Western blot analysis of ALIX on different cell lysates using anti-ALIX antibody at 1/1,000 dilution. Positive control: Lane 1: HeLa Lane 2: PC-12 Lane 3: NIH-3T3



Immunohistochemical analysis of paraffin-embedded rat stomach tissue using anti-ALIX antibody. Counter stained with hematoxylin.

Note:

For research use only, not for use in diagnostic procedure.

Bioworld Technology, Inc.

Add: 1660 South Highway 100, Suite 500 St. Louis Park, MN 55416, USA.

Email: info@bioworld.com

Tel: 6123263284

Fax: 6122933841

Bioworld technology, co. Ltd.

Add: No 9, weidi road Qixia District Nanjing, 210046, P. R. China.

Email: info@biogot.com

Tel: 0086-025-68037686

Fax: 0086-025-68035151