

ALPP polyclonal antibody

Catalog: BS90049

Host: Rabbit

Reactivity: Human

BackGround:

Alkaline phosphatases (AP) are glycosyl-phosphatidylinositol (GPI)-anchored, dimeric, Zn²⁺-metallated glycoproteins that catalyze the hydrolysis of phosphomonoesters into an inorganic phosphate and an alcohol. Placental alkaline phosphatase (also known as PLAP, ALPP, PALP, placental ALP-1 or Regan isozyme) is a 530 amino acid, tissue-specific AP that is expressed in the placenta, the serum of pregnant women and ectopically expressed in various cancers, including those of the ovary and testis. PLAP may assist in guiding migratory cells and transporting specific molecules, such as fatty acids and immunoglobulins, across the plasma membrane. The three tissue-specific APs identified in human, PLAP, germ cell AP (GCAP) and intestinal AP, are 90-98% homologous and their genes are clustered on chromosome 2q.

Product:

Rabbit IgG, 1mg/ml in PBS with 0.02% sodium azide, 50% glycerol, pH7.2

Molecular Weight:

70 kDa

Swiss-Prot:

P05187(Human)

Purification&Purity:

ProA affinity purified

Applications:

WB:1:500-1:2,000

ICC:1:50-1:200

IHC:1:50-1:200

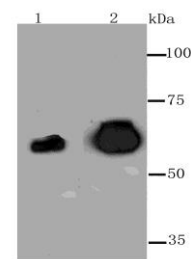
Storage&Stability:

Store at +4 °C after thawing. Aliquot store at -20 °C or -80 °C. Avoid repeated freeze / thaw cycles.

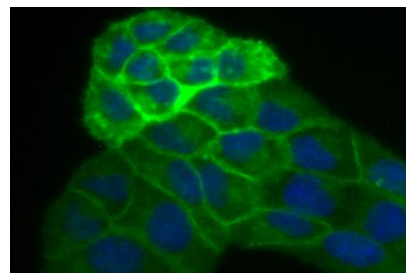
Specificity:

ALPP polyclonal antibody detects endogenous levels of ALPP protein.

DATA:



Western blot analysis of PLAP on human placenta tissue (1) and HeLa cell (2) lysate using anti-PLAP antibody at 1/1,000 dilution.



ICC staining PLAP in HeLa cells (green). The nuclear counter stain is DAPI (blue). Cells were fixed in paraformaldehyde, permeabilised with 0.25% Triton X100/PBS.

Note:

For research use only, not for use in diagnostic procedure.

Bioworld Technology, Inc.

Add: 1660 South Highway 100, Suite 500 St. Louis Park, MN 55416, USA.

Email: info@bioworld.com

Tel: 6123263284

Fax: 6122933841

Bioworld technology, co. Ltd.

Add: No 9, weidi road Qixia District Nanjing, 210046, P. R. China.

Email: info@biogot.com

Tel: 0086-025-68037686

Fax: 0086-025-68035151