

## AR- $\beta$ 2 polyclonal antibody

Catalog: BS90092

Host: Rabbit

Reactivity: Human, Mouse, Rat, zebrafish

### BackGround:

Adrenergic receptors (ARs) (the term "adrenergic" reflects the alternative name for epinephrine, adrenaline) include four general types ( $\alpha$ 1,  $\alpha$ 2,  $\beta$ 1 and  $\beta$ 2) which are found in different target tissues and differ in their affinities and responses to various agonists and antagonists. cDNA clones have been isolated for all of the major AR subtypes and a number of closely related receptors have been identified by this approach. Each of the receptors have been shown to consist of single polypeptide chains which transverse the plasma membrane seven times, presumably forming a bundle of helices within the membrane. These transmembrane regions are hydrophobic and are interconnected by extracellular and intracellular hydrophilic loops. The coupling of ARs to specific intracellular effectors is mediated through diverse heterotrimeric G proteins and is regulated by G protein-coupled receptor kinases (GRKs), cAMP-dependent protein kinase A and protein kinase C directed phosphorylation.  $\beta$ 2-adrenergic receptors bind catecholamines (epinephrine, norepinephrine) and influence development, behavior, cardiac function, smooth muscle tone, and metabolism.  $\beta$ 2-AR signaling complexes can contain C L-type calcium channel  $\text{Ca(V)}1.2$ , G protein, adenylyl cyclase, cAMP-dependent kinase, and PP2A phosphatase.

### Product:

Rabbit IgG, 1mg/ml in PBS with 0.02% sodium azide, 50% glycerol, pH7.2

### Molecular Weight:

60 kDa

### Swiss-Prot:

P07550(Human) P18762(Mouse) P10608(Rat)

### Purification&Purity:

ProA affinity purified

### Applications:

WB:1:1,000-1:5,000

IHC:1:50-1:200

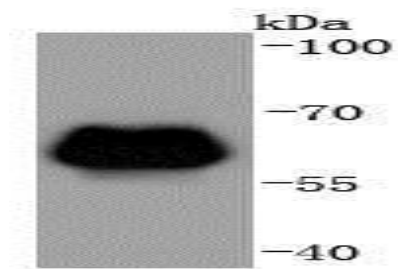
### Storage&Stability:

Store at +4 °C after thawing. Aliquot store at -20 °C or -80 °C. Avoid repeated freeze / thaw cycles.

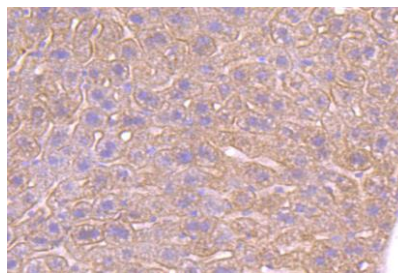
### Specificity:

AR- $\beta$ 2 polyclonal antibody detects endogenous levels of AR- $\beta$ 2 protein.

### DATA:



Western blot analysis of ADRB2 on zebrafish lysates using anti-ADRB2 antibody at 1/1,000 dilution.



Immunohistochemical analysis of paraffin-embedded mouse liver tissue using anti-ADRB2 antibody. Counter stained with hematoxylin.

### Note:

For research use only, not for use in diagnostic procedure.

### Bioworld Technology, Inc.

Add: 1660 South Highway 100, Suite 500 St. Louis Park, MN 55416, USA.

Email: [info@bioworld.com](mailto:info@bioworld.com)

Tel: 6123263284

Fax: 6122933841

### Bioworld technology, co. Ltd.

Add: No 9, weidi road Qixia District Nanjing, 210046, P. R. China.

Email: [info@biogot.com](mailto:info@biogot.com)

Tel: 0086-025-68037686

Fax: 0086-025-68035151