

Atg16L1 polyclonal antibody

Catalog: BS90104

Host: Rabbit

Reactivity: Human, Mouse, Rat

BackGround:

Plays an essential role in autophagy: interacts with ATG12-ATG5 to mediate the conjugation of phosphatidylethanolamine (PE) to LC3 (MAP1LC3A, MAP1LC3B or MAP1LC3C), to produce a membrane-bound activated form of LC3 named LC3-II. Thereby, controls the elongation of the nascent autophagosomal membrane. Regulates mitochondrial antiviral signaling (MAVS)-dependent type I interferon (IFN-I) production. Negatively regulates NOD1- and NOD2-driven inflammatory cytokine response. Plays a role in regulating morphology and function of Paneth cell.

Product:

Rabbit IgG, 1mg/ml in PBS with 0.02% sodium azide, 50% glycerol, pH7.2

Molecular Weight:

68/66 kDa

Swiss-Prot:

Q676U5(Human) Q8C0J2(Mouse)

Purification&Purity:

ProA affinity purified

Applications:

WB:1:500-2,000

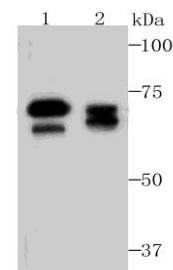
Storage&Stability:

Store at +4 °C after thawing. Aliquot store at -20 °C or -80 °C. Avoid repeated freeze / thaw cycles.

Specificity:

Atg16L1 polyclonal antibody detects endogenous levels of Atg16L1 protein.

DATA:



Western blot analysis of Atg16L1 on HeLa and PC-12 cell lysates using anti-Atg16L1 antibody at 1/500 dilution.

Note:

For research use only, not for use in diagnostic procedure.

Bioworld Technology, Inc.

Add: 1660 South Highway 100, Suite 500 St. Louis Park, MN 55416, USA.

Email: info@bioworld.com

Tel: 6123263284

Fax: 6122933841

Bioworld technology, co. Ltd.

Add: No 9, weidi road Qixia District Nanjing, 210046, P. R. China.

Email: info@biogot.com

Tel: 0086-025-68037686

Fax: 0086-025-68035151