

## Aurora B polyclonal antibody

Catalog: BS90113

Host: Rabbit

Reactivity: Human

### BackGround:

Aurora related kinase-1 (ARK-1, STK15, Aurora2, Aik1) and -2 (ARK-2, STK12, Aurora1) are centrosome-associated serine/ threonine kinases that regulate centrosome separation, bipolar spindle assembly, and chromosome segregation during mitosis. ARK-1 and -2 are expressed in the nucleus and localize to distinct portions of mitotic machinery such as the centrosome, spindle poles (ARK-1), and midbody (ARK-2) during mitosis. ARK-1 and -2 transcripts are present at high levels in human thymus and fetal liver. ARK-1 protein has elevated expression in colon carcinoma lines (HT-29, SNU-C2B, COLO 205, SW480, 837 and 948) and accumulates during metaphase in HeLa cells. ARK-2 protein levels are maximal during both S and G2/M phases, whereas ARK-1 protein is degraded after G2/M via the ubiquitin-proteasome pathway. ARK-2 has a unique genetic loci relative to ARK-1, suggesting that these two kinases, with oncogenic potential, have different roles in cell cycle progression.

### Product:

Rabbit IgG, 1mg/ml in PBS with 0.02% sodium azide, 50% glycerol, pH7.2

### Molecular Weight:

39 kDa

### Swiss-Prot:

Q96GD4(Human) O70126(Mouse) O55099(Rat)

### Purification&Purity:

ProA affinity purified

### Applications:

WB:1:1,000-1:2,000

ICC:1:50-1:200

IHC:1:50-1:200

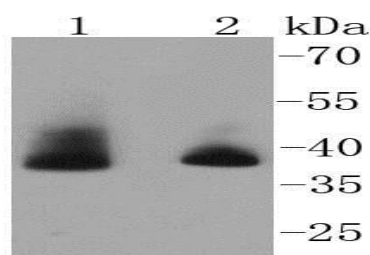
### Storage&Stability:

Store at +4 °C after thawing. Aliquot store at -20 °C or -80 °C. Avoid repeated freeze / thaw cycles.

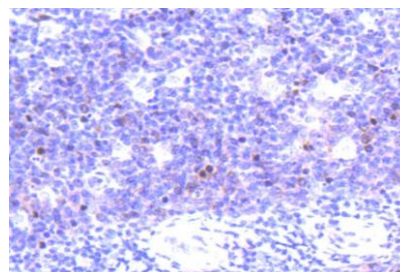
### Specificity:

Aurora B polyclonal antibody detects endogenous levels of Aurora B protein.

### DATA:



Western blot analysis of Aurora B on different lysates using anti-Aurora B antibody at 1/1,000 dilution. Positive control: Lane 1: HeLa Lane 2: MCF-7



Immunohistochemical analysis of paraffin-embedded human tonsil tissue using anti-Aurora B antibody. Counter stained with hematoxylin.

### Note:

For research use only, not for use in diagnostic procedure.

### Bioworld Technology, Inc.

Add: 1660 South Highway 100, Suite 500 St. Louis Park, MN 55416, USA.

Email: [info@bioworld.com](mailto:info@bioworld.com)

Tel: 6123263284

Fax: 6122933841

### Bioworld technology, co. Ltd.

Add: No 9, weidi road Qixia District Nanjing, 210046, P. R. China.

Email: [info@biogot.com](mailto:info@biogot.com)

Tel: 0086-025-68037686

Fax: 0086-025-68035151