

## B2M polyclonal antibody

Catalog: BS90115

Host: Rabbit

Reactivity: Human, Mouse, Rat

### BackGround:

Major histocompatibility complex (MHC) class 1 molecules bind to antigens for presentation on the surface of cells. The proteasome is responsible for producing these antigens from the components of foreign pathogens. MHC class 1 molecules consist of an a heavy chain that contains three subdomains ( $\alpha 1$ ,  $\alpha 2$ ,  $\alpha 3$ ), and a non-covalent associating light chain, known as  $\beta$ -2-Microglobulin.  $\beta$ -2-Microglobulin associates with the  $\alpha 3$  subdomain of the a heavy chain and forms an immunoglobulin domain-like structure that mediates proper folding and expression of MHC class 1 molecules. The  $\alpha 1$  and  $\alpha 2$  domains of the a heavy chain form the peptide antigen-binding cleft. Mice that lack  $\beta$ -2-Microglobulin protein show a normal distribution of T cells, yet have no mature CD4-8+ T cells and are defective in CD4-8+ T cell-mediated cytotoxicity. Interferon- $\gamma$  can stimulate production of  $\beta$ -2-Microglobulin transcripts. The human  $\beta$ -2-Microglobulin gene maps to chromosome 15q21-q22.2 and encodes a 119 amino acid protein. Mutations in the  $\beta$ -2-Microglobulin gene can enhance the progression of malignant melanoma phenotypes.

### Product:

Rabbit IgG, 1mg/ml in PBS with 0.02% sodium azide, 50% glycerol, pH7.2

### Molecular Weight:

14 kDa

### Swiss-Prot:

P61769(Human) P01887(Mouse) P07151(Rat)

### Purification&Purity:

ProA affinity purified

### Applications:

WB:1:1,000-1:2,000

ICC:1:50-1:200

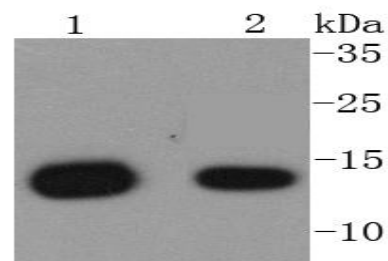
### Storage&Stability:

Store at +4 °C after thawing. Aliquot store at -20 °C or -80 °C. Avoid repeated freeze / thaw cycles.

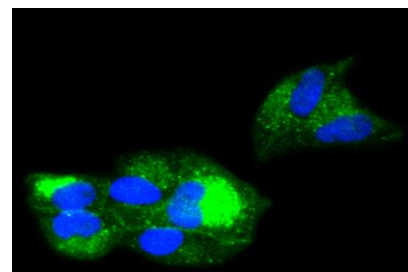
### Specificity:

B2M polyclonal antibody detects endogenous levels of B2M protein.

### DATA:



Western blot analysis of beta 2 Microglobulin on different lysates using anti-beta 2 Microglobulin antibody at 1/1,000 dilution. Positive control: Lane 1: Raji Lane 2: U937



ICC staining beta 2 Microglobulin in HeLa cells (green). The nuclear counter stain is DAPI (blue). Cells were fixed in paraformaldehyde, permeabilised with 0.25% Triton X100/PBS.

### Note:

For research use only, not for use in diagnostic procedure.

### Bioworld Technology, Inc.

Add: 1660 South Highway 100, Suite 500 St. Louis Park, MN 55416, USA.

Email: [info@bioworld.com](mailto:info@bioworld.com)

Tel: 6123263284

Fax: 6122933841

### Bioworld technology, co. Ltd.

Add: No 9, weidi road Qixia District Nanjing, 210046, P. R. China.

Email: [info@biogot.com](mailto:info@biogot.com)

Tel: 0086-025-68037686

Fax: 0086-025-68035151