

BAF57 polyclonal antibody

Catalog: BS90116

Host: Rabbit

Reactivity: Human, Mouse, Rat

BackGround:

The SWI/SNF complex is involved in the activation of transcription via the remodeling of nucleosome structure in an ATP-dependent manner. Brm (also designated SNF1 or SNF2 α) and Brg-1 (also designated SNF2 or SNF2 β) are the ATPase subunits of the mammalian SWI/SNF complex. Brm, Brg-1, Ini1 (integrase interactor 1, also designated SNF5), BAF155 (also designated SRG3) and BAF170 are thought to comprise the functional core of the SWI/SNF complex. In higher eukaryotes, BAF57 is also a critical component of the SWI/SNF complex. BAF57 contains a high-mobility-group (HMG) domain adjacent to a kinesin-like region and is a DNA-binding subunit of the SWI/SNF complex. The human BAF57 gene maps within the q12-25 region of chromosome 17, a gene-rich area implicated in breast and ovarian cancers.

Product:

Rabbit IgG, 1mg/ml in PBS with 0.02% sodium azide, 50% glycerol, pH7.2

Molecular Weight:

47 kDa

Swiss-Prot:

Q969G3(Human) O54941(Mouse) Q56A18(Rat)

Purification&Purity:

ProA affinity purified

Applications:

WB:1:500-1:2,000

ICC/IF:1:50-1:200

IHC:1:50-1:200

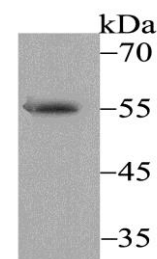
IP:1:50-1:200

Storage&Stability:

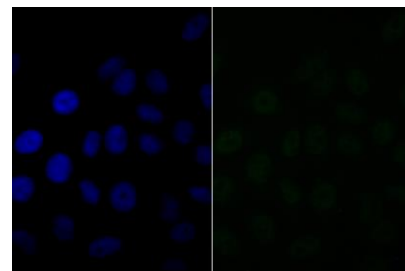
Store at +4 °C after thawing. Aliquot store at -20 °C. Avoid repeated freeze / thaw cycles.

Specificity:

BAF57 polyclonal antibody detects endogenous levels of BAF57 protein.

DATA:

Western blot analysis of BAF57 on SH-SY-5Y cell lysate using anti-BAF57 antibody at 1/1,000 dilution.



ICC staining BAF57 in HepG2 cells (green). The nuclear counter stain is DAPI (blue). Cells were fixed in paraformaldehyde, permeabilised with 0.25% Triton X100/PBS.

Note:

For research use only, not for use in diagnostic procedure.

Bioworld Technology, Inc.

Add: 1660 South Highway 100, Suite 500 St. Louis Park, MN 55416, USA.

Email: info@bioworld.com

Tel: 6123263284

Fax: 6122933841

Bioworld technology, co. Ltd.

Add: No 9, weidi road Qixia District Nanjing, 210046, P. R. China.

Email: info@biogot.com

Tel: 0086-025-68037686

Fax: 0086-025-68035151