

## BCHE polyclonal antibody

Catalog: BS90122

Host: Rabbit

Reactivity: Human

### BackGround:

Present in most cells except erythrocytes, butyrylcholine esterase (BChE), also designated acylcholine acylhydrolase or pseudocholinesterase, has esterase activity as well as aryl acylamidase activity. It hydrolyzes acylcholine into choline and carboxylate. BChE is synthesized in the liver and is highly reactive with organophosphate esters. BChE can form a homotetramer composed of two dimers linked by a disulfide bond. Defects in the gene encoding BChE are associated with the disease hypocholinesterasemia. Inhibition of BChE effects the toxicity of organophosphates in the respiratory system suggesting that BChE may play a role in respiratory function. In addition, BChE may play an important pharmacological role by hydrolyzing toxic esters. This suggests an involvement of BChE in a treatment for intoxication with substances such as cocaine.

### Product:

Rabbit IgG, 1mg/ml in PBS with 0.02% sodium azide, 50% glycerol, pH7.2

### Molecular Weight:

68 kDa

### Swiss-Prot:

P06276(Human)

### Purification&Purity:

Protein affinity purified.

### Applications:

WB:1:500-1:2,000

ICC:1:50-1:200

IHC:1:50-1:200

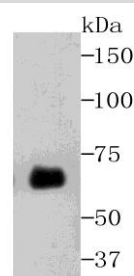
### Storage&Stability:

Store at +4 °C after thawing. Aliquot store at -20 °C. Avoid repeated freeze / thaw cycles.

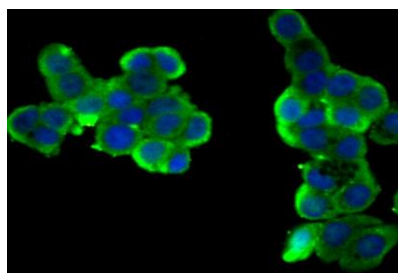
### Specificity:

BCHE polyclonal antibody detects endogenous levels of BCHE protein.

### DATA:



Western blot analysis of BCHE on human blood plasma using anti-BCHE antibody at 1/1,000 dilution.



ICC staining BCHE in LOVO cells (green). The nuclear counter stain is DAPI (blue). Cells were fixed in paraformaldehyde, permeabilised with 0.25% Triton X100/PBS.

### Note:

For research use only, not for use in diagnostic procedure.

### Bioworld Technology, Inc.

Add: 1660 South Highway 100, Suite 500 St. Louis Park, MN 55416, USA.

Email: [info@bioworld.com](mailto:info@bioworld.com)

Tel: 6123263284

Fax: 6122933841

### Bioworld technology, co. Ltd.

Add: No 9, weidi road Qixia District Nanjing, 210046, P. R. China.

Email: [info@biogot.com](mailto:info@biogot.com)

Tel: 0086-025-68037686

Fax: 0086-025-68035151