

## Biglycan polyclonal antibody

Catalog: BS90136

Host: Rabbit

Reactivity: Human, Mouse

### BackGround:

Biglycan, a class I small leucine rich proteoglycan (SLRP) present in the extracellular matrix, influences bone cell differentiation and proliferation. Biglycan contains two chondroitin sulfate glucosaminoglycan (GAG) chains attached near its amino terminus, whereas a closely related SLRP, decorin, contains only one. Biglycan deficient specimens possess diminished capacity to produce bone cells precursors, a lessened response to TGF $\beta$ , reduced collagen synthesis, and increased apoptosis. Patients with rheumatoid arthritis express increased immunity to biglycan whereas osteoarthritis patients do not, suggesting that higher immunity to SLRPs may play a role in the pathogenesis of inflammatory rheumatic diseases.

### Product:

Rabbit IgG, 1mg/ml in PBS with 0.02% sodium azide, 50% glycerol, pH7.2

### Molecular Weight:

42 kDa

### Swiss-Prot:

P21810(Human) P28653(Mouse)

### Purification&Purity:

ProA affinity purified

### Applications:

WB:1:500-1:1000

IHC:1:50-1:200

FC:1:50-1:100

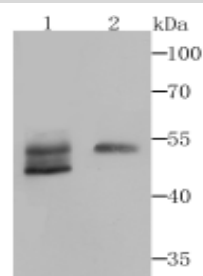
### Storage&Stability:

Store at +4 °C after thawing. Aliquot store at -20 °C or -80 °C. Avoid repeated freeze / thaw cycles.

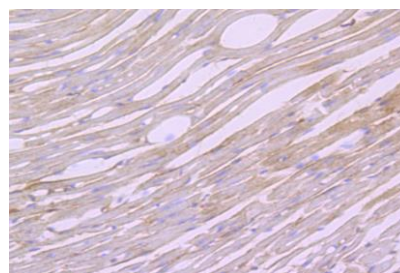
### Specificity:

Biglycan polyclonal antibody detects endogenous levels of Biglycan protein.

### DATA:



Western blot analysis of Biglycan on mouse heart and human skin tissue lysates using anti-Biglycan antibody at 1/500 dilution.



Immunohistochemical analysis of paraffin-embedded mouse heart tissue using anti-Biglycan antibody. Counter stained with hematoxylin.

### Note:

For research use only, not for use in diagnostic procedure.

### Bioworld Technology, Inc.

Add: 1660 South Highway 100, Suite 500 St. Louis Park, MN 55416, USA.

Email: [info@bioworld.com](mailto:info@bioworld.com)

Tel: 6123263284

Fax: 6122933841

### Bioworld technology, co. Ltd.

Add: No 9, weidi road Qixia District Nanjing, 210046, P. R. China.

Email: [info@biogot.com](mailto:info@biogot.com)

Tel: 0086-025-68037686

Fax: 0086-025-68035151