

Bim polyclonal antibody

Catalog: BS90137

Host: Rabbit

Reactivity: Human

BackGround:

Pro-apoptotic Bcl-2 family members promote cell death by neutralizing their anti-apoptotic relatives, which otherwise maintain cell viability by regulating caspase activity. Bim belongs to the BH3-only subgroup of Bcl-2 related proteins, and exists in three distinct isoforms, BimS (short), BimL (long) and BimEL (extra long). ERK1/2 phosphorylates BimEL, resulting in rapid degradation of the isoform via the proteasome pathway. At least three sites for ERK1/2 phosphorylation exist on BimEL, whereas ERK1/2 does not effect BimS and BimL, implying a unique role for BimEL in cell survival signaling.

Product:

Rabbit IgG, 1mg/ml in PBS with 0.02% sodium azide, 50% glycerol, pH7.2

Molecular Weight:

22/16/13 kDa

Swiss-Prot:

O43521(Human)

Purification&Purity:

ProA affinity purified

Applications:

WB:1:1,000-1:2,000

ICC:1:50-1:200

IHC:1:50-1:200

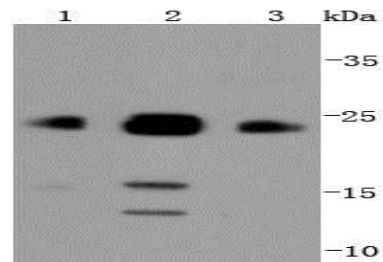
Storage&Stability:

Store at +4 °C after thawing. Aliquot store at -20 °C or -80 °C. Avoid repeated freeze / thaw cycles.

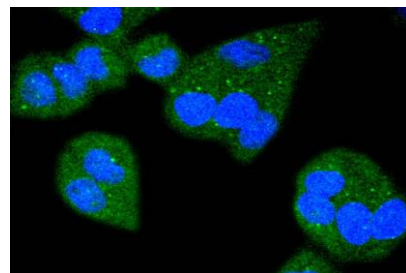
Specificity:

Bim polyclonal antibody detects endogenous levels of Bim protein.

DATA:



Western blot analysis of Bim on different lysates using anti-Bim antibody at 1/1,000 dilution. Positive control: Lane 1: Raji Lane 2: Jurkat Lane 3: A431



ICC staining Bim in HeLa cells (green). The nuclear counter stain is DAPI (blue). Cells were fixed in paraformaldehyde, permeabilised with 0.25% Triton X100/PBS.

Note:

For research use only, not for use in diagnostic procedure.

Bioworld Technology, Inc.

Add: 1660 South Highway 100, Suite 500 St. Louis Park, MN 55416, USA.

Email: info@bioworld.com

Tel: 6123263284

Fax: 6122933841

Bioworld technology, co. Ltd.

Add: No 9, weidi road Qixia District Nanjing, 210046, P. R. China.

Email: info@biogot.com

Tel: 0086-025-68037686

Fax: 0086-025-68035151