

Bmi1 polyclonal antibody

Catalog: BS90140

Host: Rabbit

Reactivity: Human, Rat

BackGround:

In *Drosophila*, Polycomb (Pc-g) gene family encodes chromatin proteins that are required for the repression of homeotic loci in embryonic development. Mel-18 and Bmi-1, mammalian homologs of *Drosophila* Pc-g group proteins, are similarly expressed during development and implicated in the regulation of gene expression, axial skeleton development, control of proliferation and survival of haematopoietic cells. Mel-18 directly binds to DNA through a RING-finger motif and preferentially associates with juxtaposed enhancer elements on various genes, including Bcl-2, c-Myc and Hox. Mel-18 is an immediate early response gene within the c-Myc/Cdc25 signaling cascade that exhibits tumor suppressor activity and negatively regulates cell cycle progression by blocking S phase entry. Alternatively, Bmi-1 has been identified as a potent oncogene as it contributes to the transcriptional activation of genes implicated in early lymphoid development. Proviral activation of Bmi-1 expression corresponds to enhanced gene-specific activation of other proto-oncogenes, including c-Myc and Pim, subsequently resulting in the progression of lymphomagenesis.

Product:

Rabbit IgG, 1mg/ml in PBS with 0.02% sodium azide, 50% glycerol, pH7.2

Molecular Weight:

42 kDa

Swiss-Prot:

P35226(Human) EntrezGene:307151(Rat)

Purification&Purity:

ProA affinity purified

Applications:

WB:1:1,000-1:2,000

ICC:1:50-1:200

IHC:1:50-1:200

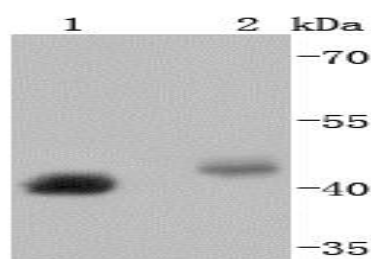
Storage&Stability:

Store at +4 °C after thawing. Aliquot store at -20 °C or -80 °C. Avoid repeated freeze / thaw cycles.

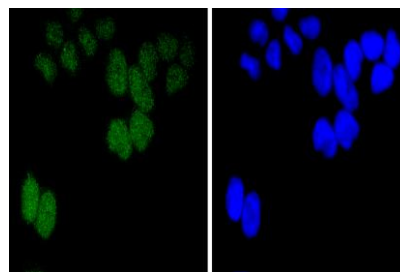
Specificity:

Bmi1 polyclonal antibody detects endogenous levels of Bmi1 protein.

DATA:



Western blot analysis of Bmi1 on different lysates using anti-Bmi1 antibody at 1/1,000 dilution. Positive control: Lane 1: K562 Lane 2: PC-12



ICC staining Bmi1 in HeLa cells (green). The nuclear counter stain is DAPI (blue). Cells were fixed in paraformaldehyde, permeabilised with 0.25% Triton X100/PBS.

Note:

For research use only, not for use in diagnostic procedure.

Bioworld Technology, Inc.

Add: 1660 South Highway 100, Suite 500 St. Louis Park, MN 55416, USA.

Email: info@bioworld.com

Tel: 6123263284

Fax: 6122933841

Bioworld technology, co. Ltd.

Add: No 9, weidi road Qixia District Nanjing, 210046, P. R. China.

Email: info@biogot.com

Tel: 0086-025-68037686

Fax: 0086-025-68035151