

BMP2 polyclonal antibody

Catalog: BS90141

Host: Rabbit

Reactivity: Human, Mouse, Rat

Background:

BMP-2 belongs to the TGF- β superfamily of proteins. BMP-2 plays an important role in the development of bone and cartilage. It is involved in the hedgehog pathway, TGF beta signaling pathway, and in cytokine-cytokine receptor interaction. It is involved also in cardiac cell differentiation and epithelial to mesenchymal transition. Implantation of BMP-2 in a collagen sponge induces new bone formation and can be used for the treatment of bony defects, delayed union, and non-union.

Product:

Rabbit IgG, 1mg/ml in PBS with 0.02% sodium azide, 50% glycerol, pH7.2

Molecular Weight:

75kDa

Swiss-Prot:

P12643(Human) P21274(Mouse) P49001(Rat)

Purification&Purity:

Peptide affinity purified

Applications:

WB:1:1,000

ICC:1:200

IHC:1:200

FC:1:100-1:200

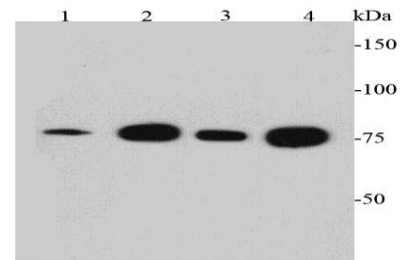
Storage&Stability:

Store at +4 °C after thawing. Aliquot store at -20 °C. Avoid repeated freeze / thaw cycles.

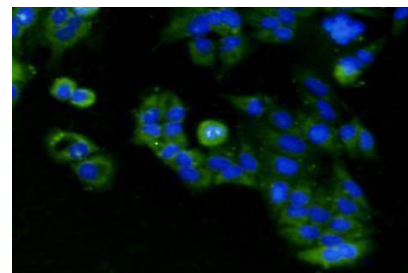
Specificity:

BMP2 polyclonal antibody detects endogenous levels of BMP2 protein.

DATA:



Western blot analysis of BMP2 on different lysates using anti-BMP2 antibody at 1/1,000 dilution. Positive control: Lane 1: Rat kidney Lane 2: Mouse kidney Lane 3: Human kidney Lane 4: HeLa



ICC staining BMP2 in HeLa cells (green). Cells were fixed in paraformaldehyde, permeabilised with 0.25% Triton X100/PBS. DAPI was used to stain the cell nuclei (blue).

Note:

For research use only, not for use in diagnostic procedure.

Bioworld Technology, Inc.

Add: 1660 South Highway 100, Suite 500 St. Louis Park, MN 55416, USA.

Email: info@bioworld.com

Tel: 6123263284

Fax: 6122933841

Bioworld technology, co. Ltd.

Add: No 9, weidi road Qixia District Nanjing, 210046, P. R. China.

Email: info@biogot.com

Tel: 0086-025-68037686

Fax: 0086-025-68035151