

BRD2 polyclonal antibody

Catalog: BS90147

Host: Rabbit

Reactivity: Human, Mouse, Rat

BackGround:

The bromodomain-containing proteins include BRD2, BRD3, BRD4 and BRDT. BRD2 (RING3 protein) is a mitogen-activated nuclear protein whose gene is located in the human MHC II region, suggesting its relation to HLA-associated diseases. The gene encoding BRD3 (RING3-like protein) contains two bromodomains and maps to chromosome 9q34. BRD4 (HUNK1 protein) is a nuclear protein involved in the regulation of chromosomal dynamics during mitosis. The testis-specific bromodomain protein BRDT contains a PEST sequence, indicating that it undergoes rapid intracellular degradation. The bromodomain-containing proteins are ubiquitously expressed.

Product:

Rabbit IgG, 1mg/ml in PBS with 0.02% sodium azide, 50% glycerol, pH7.2

Molecular Weight:

~ 110 kDa

Swiss-Prot:

P25440

Purification&Purity:

The antibody was affinity-purified from rabbit antiserum by affinity-chromatography using epitope-specific immunogen and the purity is > 95% (by SDS-PAGE).

Applications:

WB:1:500-1:1,000

IHC-P:1:50-1:200

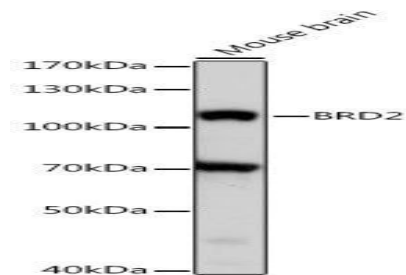
Storage&Stability:

Store at +4 °C after thawing. Aliquot store at -20 °C. Avoid repeated freeze / thaw cycles.

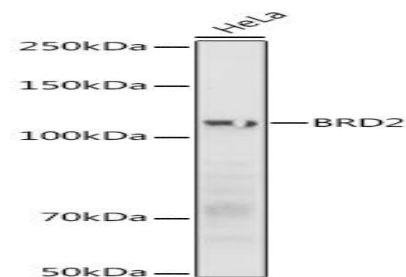
Specificity:

BRD2 polyclonal antibody detects endogenous levels of BRD2 protein.

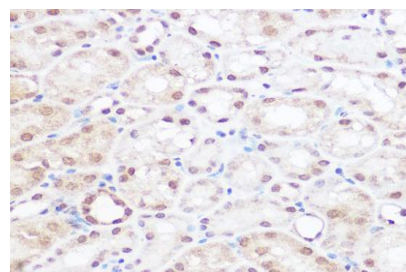
DATA:



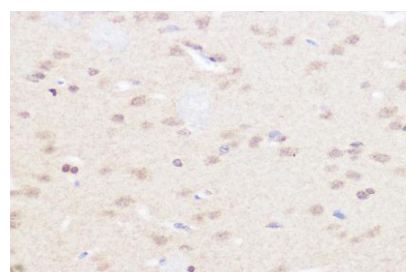
Western blot analysis of lysates from mouse brain, using BRD2 pAb at 1:1000 dilution.



Western blot analysis of lysates from HeLa cells, using BRD2 pAb at 1:1000 dilution.



Immunohistochemistry analysis of paraffin-embedded mouse kidney using BRD2 pAb at dilution of 1:50 (40x lens).



Immunohistochemistry analysis of paraffin-embedded rat brain using BRD2 pAb at dilution of 1:50 (40x lens).

Bioworld Technology, Inc.

Add: 1660 South Highway 100, Suite 500 St. Louis Park, MN 55416, USA.

Email: info@bioworld.com

Tel: 6123263284

Fax: 6122933841

Bioworld technology, co. Ltd.

Add: No 9, weidi road Qixia District Nanjing, 210046, P. R. China.

Email: info@biogot.com

Tel: 0086-025-68037686

Fax: 0086-025-68035151



PRODUCT DATA SHEET

Bioworld Technology, Inc.

Note:

For research use only, not for use in diagnostic procedure.

Bioworld Technology, Inc.

Add: 1660 South Highway 100, Suite 500 St. Louis Park,
MN 55416, USA.

Email: info@bioworld.com

Tel: 6123263284

Fax: 6122933841

Bioworld technology, co. Ltd.

Add: No 9, weidi road Qixia District Nanjing, 210046,
P. R. China.

Email: info@biogot.com

Tel: 0086-025-68037686

Fax: 0086-025-68035151