

BRG1 polyclonal antibody

Catalog: BS90148

Host: Rabbit

Reactivity: Human, Mouse, Rat

BackGround:

The SWI-SNF complex is involved in the activation of transcription via the remodeling of nucleosome structure in an ATP-dependent manner. Brm (also designated SNF2 α) and Brg-1 (also designated SNF2 β) are the ATPase subunits of the mammalian SWI-SNF complex. Brm, Brg-1, Ini1 (integrase interactor 1, also designated SNF5), BAF155 (also designated SRG3) and BAF170 are thought to comprise the functional core of the SWI-SNF complex. Addition of Ini1, BAF155 and BAF170 to Brg-1 appears to increase remodeling activity. Other complex subunits are thought to play regulatory roles. hSNF2L and hSNF2H both appear to be homologs of Drosophila ISWI, a Brm related ATPase that is present in chromatin remodeling complexes other than SWI/SNF, including the NURF (nucleosome remodeling factor).

Product:

Rabbit IgG, 1mg/ml in PBS with 0.02% sodium azide, 50% glycerol, pH7.2

Molecular Weight:

185 kDa

Swiss-Prot:

P51532(Human) Q3TKT4(Mouse) Q8K1P7(Rat)

Purification&Purity:

ProA affinity purified

Applications:

WB:1:1,000-1:5,000

ICC:1:50-1:200

IHC:1:50-1:200

Storage&Stability:

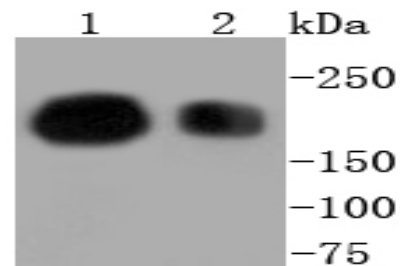
Store at +4 °C after thawing. Aliquot store at -20 °C or

-80 °C. Avoid repeated freeze / thaw cycles.

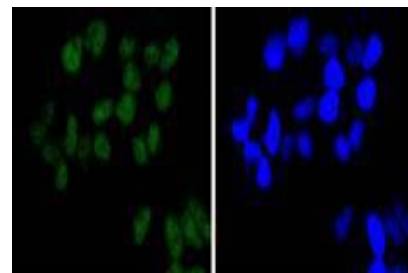
Specificity:

BRG1 polyclonal antibody detects endogenous levels of BRG1 protein.

DATA:



Western blot analysis of BRG1 on different lysates using anti-BRG1 antibody at 1/1,000 dilution. Positive control: Lane 1: Jurkat Lane 2: HepG2



ICC staining BRG1 in HeLa cells (green). The nuclear counter stain is DAPI (blue). Cells were fixed in paraformaldehyde, permeabilised with 0.25% Triton X100/PBS.

Note:

For research use only, not for use in diagnostic procedure.

Bioworld Technology, Inc.

Add: 1660 South Highway 100, Suite 500 St. Louis Park, MN 55416, USA.

Email: info@bioworld.com

Tel: 6123263284

Fax: 6122933841

Bioworld technology, co. Ltd.

Add: No 9, weidi road Qixia District Nanjing, 210046, P. R. China.

Email: info@biogot.com

Tel: 0086-025-68037686

Fax: 0086-025-68035151