

BST2 polyclonal antibody

Catalog: BS90149

Host: Rabbit

Reactivity: Human

BackGround:

May be involved in the sorting of secreted proteins. May be involved in pre-B-cell growth. Antiretroviral defense protein, that blocks release of retrovirus from the cell surface. Depleted upon HIV-1 infection by viral VPU protein through 20S proteasome degradation. Depleted upon infection by human Kaposi's sarcoma-associated herpesvirus (KSHV) through ubiquitination and subsequent degradation. May play a role in B-cell activation in rheumatoid arthritis.

Product:

Rabbit IgG, 1mg/ml in PBS with 0.02% sodium azide, 50% glycerol, pH7.2

Molecular Weight:

40 kDa

Swiss-Prot:

Q10589(Human)

Purification&Purity:

ProA affinity purified

Applications:

WB:1:500

IHC:1:50-1:200

FC:1:50-1:100

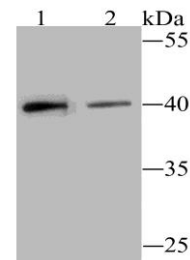
Storage&Stability:

Store at +4 °C after thawing. Aliquot store at -20 °C or -80 °C. Avoid repeated freeze / thaw cycles.

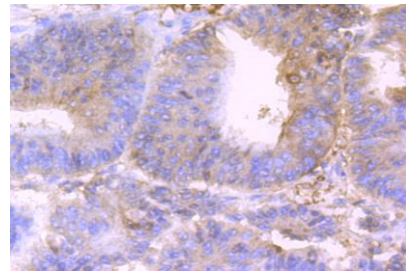
Specificity:

BST2 polyclonal antibody detects endogenous levels of BST2 protein.

DATA:



Western blot analysis of BST2 on HeLa (1) and SiHa (2) cell lysate using anti-BST2 antibody at 1/500 dilution.



Immunohistochemical analysis of paraffin-embedded human colon cancer tissue using anti-BST2 antibody. Counter stained with hematoxylin.

Note:

For research use only, not for use in diagnostic procedure.

Bioworld Technology, Inc.

Add: 1660 South Highway 100, Suite 500 St. Louis Park, MN 55416, USA.

Email: info@bioworld.com

Tel: 6123263284

Fax: 6122933841

Bioworld technology, co. Ltd.

Add: No 9, weidi road Qixia District Nanjing, 210046, P. R. China.

Email: info@biogot.com

Tel: 0086-025-68037686

Fax: 0086-025-68035151