

Bub3 polyclonal antibody

Catalog: BS90151

Host: Rabbit

Reactivity: Human, Mouse, Rat

BackGround:

BUB3 (budding uninhibited by benzimidazoles 3 homolog), also known as BUB3L or hBUB3, is a conserved component of the mitotic spindle assembly complex (MCC). It contains five WD repeat domains and forms cell cycle constitutive complexes with BUB1 and BUBR1. BUB3 is essential for the kinetochore localization of BUB1 and BUBR1. As a component of the MCC, BUB3 is involved in the essential spindle checkpoint pathway that operates during early embryogenesis. The spindle checkpoint pathway functions to postpone the initiation of anaphase until chromosomes are properly attached to the spindle. This acts to ensure accurate chromosome segregation. In addition, BUB3 plays a role in regulating the establishment of correct kinetochore-microtubule attachments. BUB3 is also thought to bind Tctex1L (or DYNLT3), a dynein light chain.

Product:

Rabbit IgG, 1mg/ml in PBS with 0.02% sodium azide, 50% glycerol, pH7.2

Molecular Weight:

37 kDa

Swiss-Prot:

O43684(Human) Q9WVA3(Mouse)

Purification&Purity:

ProA affinity purified

Applications:

WB:1:500-1:2,000

ICC:1:50-1:200

IHC:1:50-1:200

IP:1:10-1:50

FC:1:50-1:100

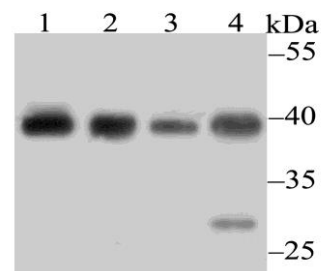
Storage&Stability:

Store at +4 °C after thawing. Aliquot store at -20 °C. Avoid repeated freeze / thaw cycles.

Specificity:

Bub3 polyclonal antibody detects endogenous levels of Bub3 protein.

DATA:



Western blot analysis of Bub3 on different lysates using anti-Bub3 antibody at 1/500 dilution.

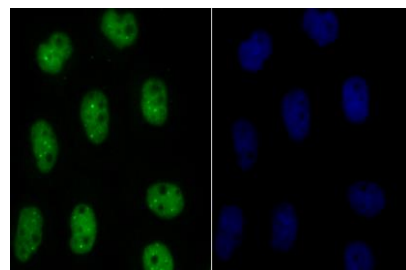
Positive control:

Lane 1: A549

Lane 2: HL-60

Lane 3: A431

Lane 4: Rat colon



ICC staining Bub3 in A431 cells (green). The nuclear counter stain is DAPI (blue). Cells were fixed in paraformaldehyde, permeabilised with 0.25% Triton X100/PBS.

Note:

For research use only, not for use in diagnostic procedure.

Bioworld Technology, Inc.

Add: 1660 South Highway 100, Suite 500 St. Louis Park, MN 55416, USA.

Email: info@bioworld.com

Tel: 6123263284

Fax: 6122933841

Bioworld technology, co. Ltd.

Add: No 9, weidi road Qixia District Nanjing, 210046, P. R. China.

Email: info@biogot.com

Tel: 0086-025-68037686

Fax: 0086-025-68035151