

C/EBP β polyclonal antibody

Catalog: BS90153

Host: Rabbit

Reactivity: Human, Mouse, Rat

BackGround:

CCAAT-enhancer binding proteins (C/EBP) are basic region/leucine zipper (bZIP) transcription factors selectively expressed during the differentiation of liver, adipose tissue, blood cells and the endocrine pancreas. C/EBP β is a member of the C/EBP transcription factor family. The C/EBP β gene encodes several isoforms containing truncated transcription activation domains due to the alternative translational initiation at multiple AUG start sites. C/EBP β is also known as interleukin 6-dependent DNA-binding protein (IL6DBP), liver activator protein (LAP) or liver-enriched transcriptional activator protein transcription factor 5 (TCF5). C/EBP β contributes to the regulation of the acute phase response in hepatocytes. Stat3 has an important function in IL-6-mediated transcription of the C/EBP β gene that has direct implication for acute phase response in liver cells. The C/EBP β form requires phosphorylation for its DNA binding ability, and increase binding of C/EBP β isoforms during acute-phase reaction occurs through its upregulation and structural modification.

Product:

Rabbit IgG, 1mg/ml in PBS with 0.02% sodium azide, 50% glycerol, pH7.2

Molecular Weight:

36 kDa

Swiss-Prot:

P17676(Human) P28033(Mouse) P21272(Rat)

Purification&Purity:

ProA affinity purified

Applications:

WB:1:1,000-1:2,000

ICC:1:50-1:200

FC:1:50-1:100

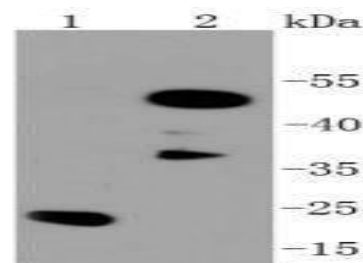
Storage&Stability:

Store at +4 °C after thawing. Aliquot store at -20 °C or -80 °C. Avoid repeated freeze / thaw cycles.

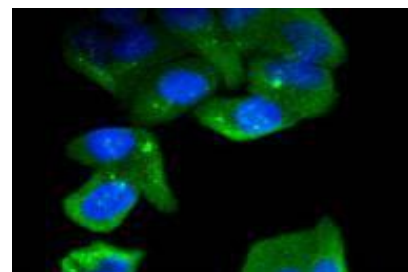
Specificity:

C/EBP β polyclonal antibody detects endogenous levels of C/EBP β protein.

DATA:



Western blot analysis of C/EBP Beta on different lysates using anti-C/EBP Beta antibody at 1/1,000 dilution. Positive control: Lane 1: Hela Lane 2: PC-12



ICC staining C/EBP Beta in HeLa cells (green). The nuclear counterstain is DAPI (blue). Cells were fixed in paraformaldehyde, permeabilized with 0.25% Triton X100/PBS.

Note:

For research use only, not for use in diagnostic procedure.

Bioworld Technology, Inc.

Add: 1660 South Highway 100, Suite 500 St. Louis Park, MN 55416, USA.

Email: info@bioworld.com

Tel: 6123263284

Fax: 6122933841

Bioworld technology, co. Ltd.

Add: No 9, weidi road Qixia District Nanjing, 210046, P. R. China.

Email: info@biogot.com

Tel: 0086-025-68037686

Fax: 0086-025-68035151