

## CaMKII delta polyclonal antibody

Catalog: BS90177

Host: Rabbit

Reactivity: Human, Mouse, Rat, Zebrafish

### BackGround:

Calcium/calmodulin-dependent protein kinase involved in the regulation of Ca<sup>2+</sup> homeostasis and excitation-contraction coupling (ECC) in heart by targeting ion channels, transporters and accessory proteins involved in Ca<sup>2+</sup> influx into the myocyte, Ca<sup>2+</sup> release from the sarcoplasmic reticulum (SR), SR Ca<sup>2+</sup> uptake and Na<sup>+</sup> and K<sup>+</sup> channel transport. Targets also transcription factors and signaling molecules to regulate heart function. In its activated form, is involved in the pathogenesis of dilated cardiomyopathy and heart failure. Regulates Ca<sup>2+</sup> influx to myocytes by binding and phosphorylating the L-type Ca<sup>2+</sup> channel subunit beta-2 CACNB2. In addition to Ca<sup>2+</sup> channels, can target and regulate the cardiac sarcolemmal Na<sup>+</sup> channel Nav1.5/SCN5A and the K<sup>+</sup> channel Kv4.3/KCND3, which contribute to arrhythmogenesis in heart failure. Phosphorylates phospholamban (PLN/PLB), an endogenous inhibitor of SERCA2A/ATP2A2, contributing to the enhancement of SR Ca<sup>2+</sup> uptake that may be important in frequency-dependent acceleration of relaxation (FDAR) and maintenance of contractile function during acidosis.

### Product:

Rabbit IgG, 1mg/ml in PBS with 0.02% sodium azide, 50% glycerol, pH7.2

### Molecular Weight:

50 kDa

### Swiss-Prot:

Q13557(Human) Q6PHZ2(Mouse) P15791(Rat)

### Purification&Purity:

ProA affinity purified

### Applications:

WB:1:500-1:2,000

IHC:1:50-1:200

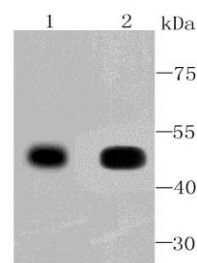
### Storage&Stability:

Store at +4 °C after thawing. Aliquot store at -20 °C or -80 °C. Avoid repeated freeze / thaw cycles.

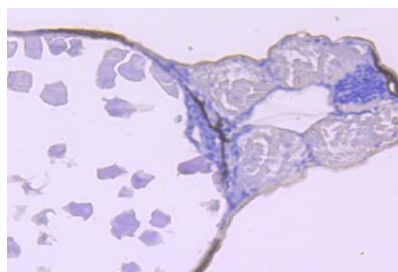
### Specificity:

CaMKII delta polyclonal antibody detects endogenous levels of CaMKII delta protein.

### DATA:



Western blot analysis of CaMKII delta on Human skeletal muscle (1) and Rat heart (2) cells lysates using anti-CaMKII delta antibody at 1/500 dilution.



Immunohistochemical analysis of paraffin-embedded zebrafish tissue using anti-CaMKII delta antibody. Counter stained with hematoxylin.

### Note:

For research use only, not for use in diagnostic procedure.

### Bioworld Technology, Inc.

Add: 1660 South Highway 100, Suite 500 St. Louis Park, MN 55416, USA.

Email: [info@bioworld.com](mailto:info@bioworld.com)

Tel: 6123263284

Fax: 6122933841

### Bioworld technology, co. Ltd.

Add: No 9, weidi road Qixia District Nanjing, 210046, P. R. China.

Email: [info@biogot.com](mailto:info@biogot.com)

Tel: 0086-025-68037686

Fax: 0086-025-68035151