

## Caspase-1 polyclonal antibody

Catalog: BS90183

Host: Rabbit

Reactivity: Human, Mouse, Rat

### Background:

Caspase-1, originally designated ICE (for IL-1 converting enzyme), is a member of the group of caspases with large prodomains. Caspase-1 promotes maturation of interleukin IL-1 $\beta$  and interleukin18 (IL-18) by proteolytic cleavage of precursor forms into biologically active pro-inflammatory cytokines. Active caspase-1, a (p20/p10)<sub>2</sub> tetramer, is necessary and sufficient for cleavage of precursor IL-1 as well as for induction of apoptosis in some cell lines. The highly conserved family of caspases mediate many of the morphological and biochemical features of apoptosis, including structural dismantling of cell bodies and nuclei, fragmentation of genomic DNA, destruction of regulatory proteins and propagation of other pro-apoptotic molecules. The human Caspase-1 gene maps to chromosome 2q14 and encodes a cytoplasmic protein expressed in liver, heart, skeletal muscle kidney and testis. Caspase-1 has been implicated in inflammation, septic shock, and other situations such as wound healing and the growth of certain leukemias.

### Product:

Rabbit IgG, 1mg/ml in PBS with 0.02% sodium azide, 50% glycerol, pH7.2

### Molecular Weight:

45 kDa

### Swiss-Prot:

P29466(Human) P29452(Mouse) P43527(Rat)

### Purification&Purity:

ProA affinity purified

### Applications:

WB:1:1,000-1:2,000

FC:1:50-1:100

IHC:1:50-1:200

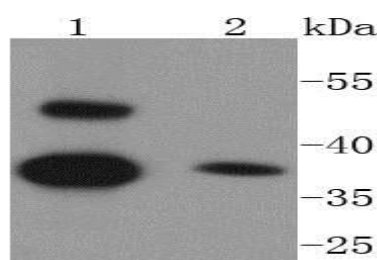
### Storage&Stability:

Store at +4 °C after thawing. Aliquot store at -20 °C or -80 °C. Avoid repeated freeze / thaw cycles.

### Specificity:

Caspase-1 polyclonal antibody detects endogenous levels of Caspase-1 protein.

### DATA:

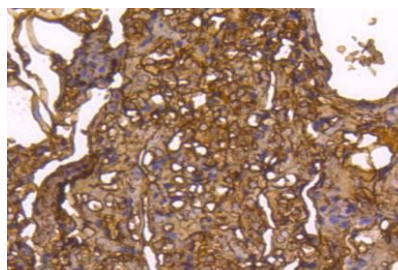


Western blot analysis of Caspase-1 on different lysates using anti-Caspase-1 antibody at 1/1,000 dilution.

Positive control:

Lane 1: THP-1

Lane 2: Jurkat



Immunohistochemical analysis of paraffin-embedded human lung tissue using anti-Caspase-1 antibody. Counter stained with hematoxylin.

### Note:

For research use only, not for use in diagnostic procedure.

### Bioworld Technology, Inc.

Add: 1660 South Highway 100, Suite 500 St. Louis Park, MN 55416, USA.

Email: [info@bioworld.com](mailto:info@bioworld.com)

Tel: 6123263284

Fax: 6122933841

### Bioworld technology, co. Ltd.

Add: No 9, weidi road Qixia District Nanjing, 210046, P. R. China.

Email: [info@biogot.com](mailto:info@biogot.com)

Tel: 0086-025-68037686

Fax: 0086-025-68035151