

Catalase polyclonal antibody

Catalog: BS90195

Host: Rabbit

Reactivity: Human, Mouse, Rat, Zebrafish

BackGround:

Catalase is a peroxisome specific marker protein belonging to the catalase family. Defects in the gene encoding for the catalase protein can cause acatalasia, a disease characterized by the absence of catalase activity in red cells and associated with ulcerating oral lesions. Catalase is also an important regulator of oxidative stress and inflammation, and may contribute to the development of rheumatoid arthritis. Catalase, which can form a homotetramer, is found in all nearly all aerobically respiring organisms and functions in protecting cells from the toxic effects of hydrogen peroxide.

Product:

Rabbit IgG, 1mg/ml in PBS with 0.02% sodium azide, 50% glycerol, pH7.2

Molecular Weight:

60 kDa

Swiss-Prot:

P04040(Human) P24270(Mouse) P04762(Rat)

Purification&Purity:

ProA affinity purified

Applications:

WB:1:1,000-1:2,000

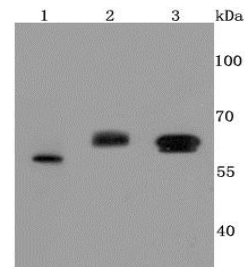
IHC:1:50-1:200

Storage&Stability:

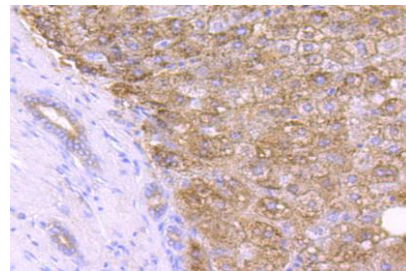
Store at +4 °C after thawing. Aliquot store at -20 °C or -80 °C. Avoid repeated freeze / thaw cycles.

Specificity:

Catalase polyclonal antibody detects endogenous levels of Catalase protein.

DATA:

Western blot analysis of Catalase on different cells lysates using anti-Catalase antibody at 1/500 dilution. Positive control: Line 1: Zebrafish Line 2: Mouse brain Line 3: HepG2



Immunohistochemical analysis of paraffin-embedded human liver tissue using anti-Catalase antibody. Counter stained with hematoxylin.

Note:

For research use only, not for use in diagnostic procedure.

Bioworld Technology, Inc.

Add: 1660 South Highway 100, Suite 500 St. Louis Park, MN 55416, USA.

Email: info@bioworld.com

Tel: 6123263284

Fax: 6122933841

Bioworld technology, co. Ltd.

Add: No 9, weidi road Qixia District Nanjing, 210046, P. R. China.

Email: info@biogot.com

Tel: 0086-025-68037686

Fax: 0086-025-68035151