

## Cathepsin B polyclonal antibody

Catalog: BS90200

Host: Rabbit

Reactivity: Human

### BackGround:

The cathepsin family of proteolytic enzymes contains several diverse classes of proteases. The cysteine protease class comprises cathepsins B, L, H, K, S, and O. The aspartyl protease class is composed of cathepsins D and E. Cathepsin G is in the serine protease class. Most cathepsins are lysosomal and each is involved in cellular metabolism, participating in various events such as peptide biosynthesis and protein degradation. Cathepsin B is expressed in luminal epithelial cells, indicating that cathepsin B is a marker for secretory cell death.

### Product:

Rabbit IgG, 1mg/ml in PBS with 0.02% sodium azide, 50% glycerol, pH7.2

### Molecular Weight:

38 kDa

### Swiss-Prot:

P07858(Human)

### Purification&Purity:

ProA affinity purified

### Applications:

WB:1:500-1:1,000

ICC:1:50-1:200

IHC:1:50-1:200

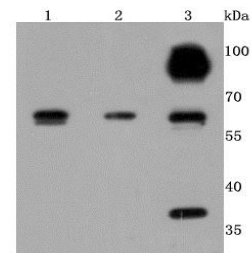
### Storage&Stability:

Store at +4 °C after thawing. Aliquot store at -20 °C or -80 °C. Avoid repeated freeze / thaw cycles.

### Specificity:

Cathepsin B polyclonal antibody detects endogenous levels of Cathepsin B protein.

### DATA:

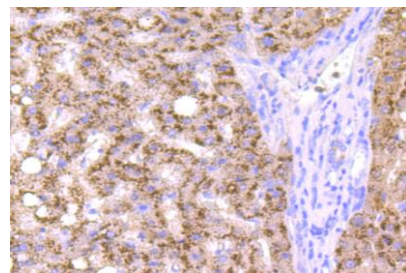


Western blot analysis of Cathepsin B on different cells lysates using anti-Cathepsin B antibody at 1/500 dilution. Positive control:

Lane 1: HepG2

Lane 2: Hela

Lane 3:A549



Immunohistochemical analysis of paraffin-embedded human liver cancer tissue using anti-Cathepsin B antibody. Counter stained with hematoxylin.

### Note:

For research use only, not for use in diagnostic procedure.

### Bioworld Technology, Inc.

Add: 1660 South Highway 100, Suite 500 St. Louis Park, MN 55416, USA.

Email: [info@bioworld.com](mailto:info@bioworld.com)

Tel: 6123263284

Fax: 6122933841

### Bioworld technology, co. Ltd.

Add: No 9, weidi road Qixia District Nanjing, 210046, P. R. China.

Email: [info@biogot.com](mailto:info@biogot.com)

Tel: 0086-025-68037686

Fax: 0086-025-68035151