

CD10 polyclonal antibody

Catalog: BS90208

Host: Rabbit

Reactivity: Human, Mouse, Rat

BackGround:

CD10, also called the common acute lymphoblastic leukemia antigen (CALLA) and neutral endopeptidase (NEP), is a type II integral membrane glycoprotein. CD10 acts as a zinc metalloprotease that cleaves a variety of biologically active peptides including Angiotensins I and II. It is expressed on early B and T lymphoid precursors, B blasts, some granulocytes, bone marrow stromal cells and certain epithelial cells including some tumor cell lines. CD10 is used as a marker of common acute lymphocytic leukemias and some lymphomas.

Product:

Rabbit IgG, 1mg/ml in PBS with 0.02% sodium azide, 50% glycerol, pH7.2

Molecular Weight:

100 kDa

Swiss-Prot:

P08473(Human) Q61391(Mouse) P07861(Rat)

Purification&Purity:

ProA affinity purified

Applications:

WB:1:500-1:1,000

ICC:1:50-1:200

FC:1:50-1:100

IHC:1:50-1:200

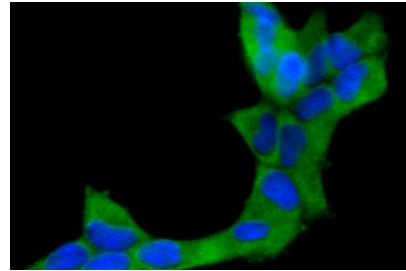
Storage&Stability:

Store at +4 °C after thawing. Aliquot store at -20 °C or -80 °C. Avoid repeated freeze / thaw cycles.

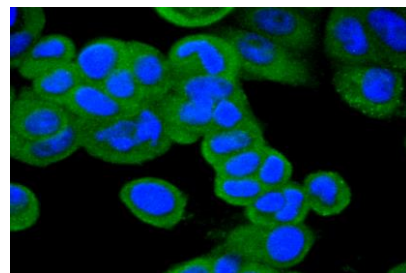
Specificity:

CD10 polyclonal antibody detects endogenous levels of CD10 protein.

DATA:



ICC staining CD10 in 293 cells (green). The nuclear counter stain is DAPI (blue). Cells were fixed in paraformaldehyde, permeabilised with 0.25% Triton X100/PBS.



ICC staining CD10 in MCF-7 cells (green). The nuclear counter stain is DAPI (blue). Cells were fixed in paraformaldehyde, permeabilised with 0.25% Triton X100/PBS.

Note:

For research use only, not for use in diagnostic procedure.

Bioworld Technology, Inc.

Add: 1660 South Highway 100, Suite 500 St. Louis Park, MN 55416, USA.

Email: info@bioworld.com

Tel: 6123263284

Fax: 6122933841

Bioworld technology, co. Ltd.

Add: No 9, weidi road Qixia District Nanjing, 210046, P. R. China.

Email: info@biogot.com

Tel: 0086-025-68037686

Fax: 0086-025-68035151