

## CD146 polyclonal antibody

Catalog: BS90217

Host: Rabbit

Reactivity: Human, Mouse, Rat

### BackGround:

The tumorigenic and metastatic phenotype of melanoma cells correlates well with an increased expression of cell-cell and cell-matrix adhesion receptors. The human Mel-CAM gene encodes a transmembrane glycoprotein, also designated MCAM, MUC18 or CD146, that belongs to the immunoglobulin superfamily and functions as a Ca<sup>2+</sup>-independent cell adhesion molecule. The deduced human sequence of 603 amino acids consists of a signal peptide, five immunoglobulin-like domains, a transmembrane region and a short cytoplasmic tail. Mel-CAM expression is restricted to advanced primary and metastatic melanomas and to cell lines of the neuroectodermal lineage, but not normal melanocytes. Mel-CAM is found on 80% of advanced primary human melanomas and correlates well with development of metastatic disease. Mel-CAM activation initiates an outside-in signaling pathway that involves the protein tyrosine kinases Fyn, FAK and paxillin. Mel-CAM influences the dynamics of Actin cytoskeleton rearrangement and is essential for the maintenance of thymic architecture and function.

### Product:

Rabbit IgG, 1mg/ml in PBS with 0.02% sodium azide, 50% glycerol, pH7.2

### Molecular Weight:

120 kDa

### Swiss-Prot:

P43121(Human) Q8R2Y2(Mouse) Q9EPF2(Rat)

### Purification&Purity:

ProA affinity purified

### Applications:

WB:1:500-1:1,000

ICC:1:100-1:500

IHC:1:50-1:200

FC:1:50-1:100

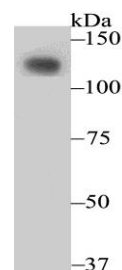
### Storage&Stability:

Store at +4 °C after thawing. Aliquot store at -20 °C or -80 °C. Avoid repeated freeze / thaw cycles.

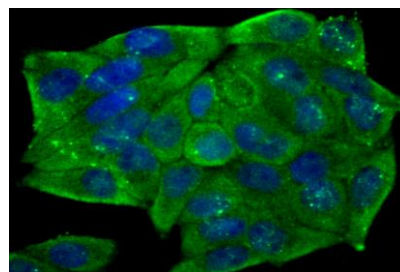
### Specificity:

CD146 polyclonal antibody detects endogenous levels of CD146 protein.

### DATA:



Western blot analysis of CD146 on SiHa cell using anti-CD146 antibody at 1/500 dilution.



ICC staining CD146 in HeLa cells (green). The nuclear counter stain is DAPI (blue). Cells were fixed in paraformaldehyde, permeabilised with 0.25% Triton X100/PBS.

### Note:

For research use only, not for use in diagnostic procedure.

### Bioworld Technology, Inc.

Add: 1660 South Highway 100, Suite 500 St. Louis Park, MN 55416, USA.

Email: [info@bioworld.com](mailto:info@bioworld.com)

Tel: 6123263284

Fax: 6122933841

### Bioworld technology, co. Ltd.

Add: No 9, weidi road Qixia District Nanjing, 210046, P. R. China.

Email: [info@biogot.com](mailto:info@biogot.com)

Tel: 0086-025-68037686

Fax: 0086-025-68035151