

## CD21 polyclonal antibody

Catalog: BS90226

Host: Rabbit

Reactivity: Human, Mouse

### Background:

CD21 is a type I integral membrane glycoprotein that serves as a receptor for the C3d complement fragment and for the Epstein-Barr virus. It plays a role in B cell activation and proliferation and undergoes phosphorylation after B cell activation with phorbol esters. CD21 is expressed on mature B cells, follicular dendritic cells, pharyngeal and cervical epithelial cells and a subset of thymocytes. The adaptive immune response is tightly regulated to limit responding cells in an antigen-specific manner. On B cells, co-receptors CD21/CD19 modulate the strength of B cell Ag receptor (BCR) signals, thereby influencing cell fate. Complement receptor (CR) type 2 (CR2/ CD21) is normally expressed during the immature and mature stages of B cell development. In association with CD19, CR21 plays an important role in enhancing mature B cell responses to foreign antigens.

### Product:

Rabbit IgG, 1mg/ml in PBS with 0.02% sodium azide, 50% glycerol, pH7.2

### Molecular Weight:

130-155 kDa

### Swiss-Prot:

P20023(Human) P19070(Mouse)

### Purification&Purity:

ProA affinity purified

### Applications:

WB:1:1,000-1:2,000

ICC:1:50-1:200

IHC:1:50-1:200

FC:1:50-1:100

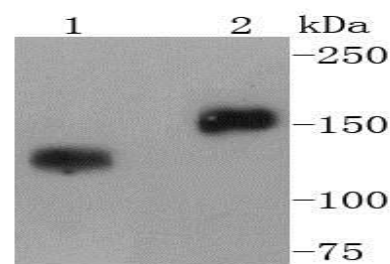
### Storage&Stability:

Store at +4 °C after thawing. Aliquot store at -20 °C or -80 °C. Avoid repeated freeze / thaw cycles.

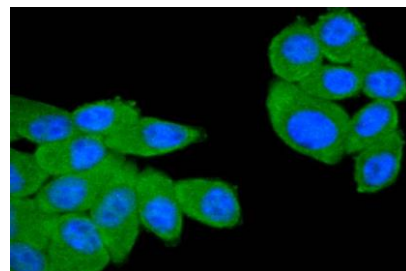
### Specificity:

CD21 polyclonal antibody detects endogenous levels of CD21 protein.

### DATA:



Western blot analysis of CD21 on different lysates using anti-CD21 antibody at 1/1,000 dilution. Positive control: Lane 1: Daudi Lane 2: Raji



ICC staining CD21 in HepG2 cells (green). The nuclear counter stain is DAPI (blue). Cells were fixed in paraformaldehyde, permeabilised with 0.25% Triton X100/PBS.

### Note:

For research use only, not for use in diagnostic procedure.

### Bioworld Technology, Inc.

Add: 1660 South Highway 100, Suite 500 St. Louis Park, MN 55416, USA.

Email: [info@bioworld.com](mailto:info@bioworld.com)

Tel: 6123263284

Fax: 6122933841

### Bioworld technology, co. Ltd.

Add: No 9, weidi road Qixia District Nanjing, 210046, P. R. China.

Email: [info@biogot.com](mailto:info@biogot.com)

Tel: 0086-025-68037686

Fax: 0086-025-68035151