

CD31 polyclonal antibody

Catalog: BS90231

Host: Rabbit

Reactivity: Human, Mouse

BackGround:

PECAM-1 is found on the surface of platelets, monocytes, neutrophils, and some types of T-cells, and makes up a large portion of endothelial cell intercellular junctions. The encoded protein is a member of the immunoglobulin superfamily and is likely involved in leukocyte transmigration, angiogenesis, and integrin activation. CD31 is also expressed in certain tumors, including epithelioid hemangioendothelioma, epithelioid sarcoma-like hemangioendothelioma, other vascular tumors, histiocytic malignancies, and plasmacytomas. It is rarely found in some sarcomas, such as Kaposi's sarcoma and carcinomas. In immunohistochemistry, CD31 is used primarily to demonstrate the presence of endothelial cells in histological tissue sections. This can help to evaluate the degree of tumour angiogenesis, which can imply a rapidly growing tumor

Product:

Rabbit IgG, 1mg/ml in PBS with 0.02% sodium azide, 50% glycerol, pH7.2

Molecular Weight:

82 kDa (Observed: 130 kDa)

Swiss-Prot:

P16284(Human) Q08481(Mouse)

Purification&Purity:

Peptide affinity purified

Applications:

WB:1:1,000

ICC:1:200

IHC:1:200

FC:1:100-1:200

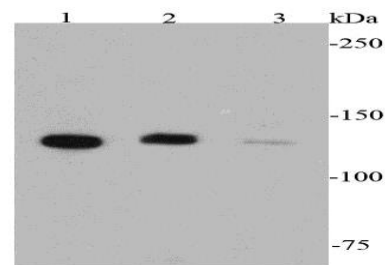
Storage&Stability:

Store at +4°C after thawing. Aliquot store at -20°C. Avoid repeated freeze / thaw cycles.

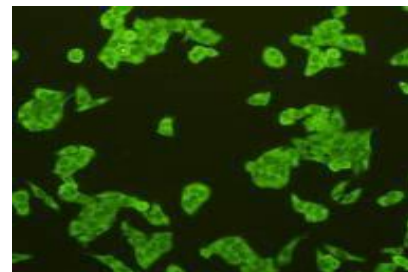
Specificity:

CD31 polyclonal antibody detects endogenous levels of CD31 protein.

DATA:



Western blot analysis of CD31 on different cell lysates using anti-CD31 antibody at 1/1000 dilution.



ICC staining CD31 in HeLa cells (green). Cells were fixed in paraformaldehyde, permeabilised with 0.25% Triton X100/PBS.

Note:

For research use only, not for use in diagnostic procedure.

Bioworld Technology, Inc.

Add: 1660 South Highway 100, Suite 500 St. Louis Park, MN 55416, USA.

Email: info@bioworld.com

Tel: 6123263284

Fax: 6122933841

Bioworld technology, co. Ltd.

Add: No 9, weidi road Qixia District Nanjing, 210046, P. R. China.

Email: info@biogot.com

Tel: 0086-025-68037686

Fax: 0086-025-68035151