

CD40L polyclonal antibody

Catalog: BS90246

Host: Rabbit

Reactivity: Human, Mouse

BackGround:

Resting B cells can be activated and clonally expanded into antibody-producing cells in response to a combination of cell contact and soluble signals provided by primed helper T (Th) cells. While cytokines IL-4 and IL-13 alone are inadequate for B cell activation, contact with Th cells seems to be sufficient for delivery of proliferative signals. CD40 and CD154 (also designated CD40L or TRAP) comprise a receptor ligand pair central to the transmission of this signal. CD40 is expressed on the surface of B cells and CD154 is expressed on activated T cells. In the presence of such stimulus, IL-4 and IL-13 are capable of triggering immunoglobulin class switching and secretion of IgE. CD154 is a 261 amino acid protein that is expressed as a soluble cytokine as well as a homotrimeric type II transmembrane protein. Its expression is tightly regulated, and abnormal levels of CD154 are associated with the pathogenesis of atherosclerotic plaque destabilization and thrombotic events. Mutations in the gene encoding for CD154 are implicated in hyper-IgM immunodeficiency syndrome type 1.

Product:

Rabbit IgG, 1mg/ml in PBS with 0.02% sodium azide, 50% glycerol, pH7.2

Molecular Weight:

36 kDa

Swiss-Prot:

P29965(Human) P27548(Mouse)

Purification&Purity:

ProA affinity purified

Applications:

WB:1:500-1:1,000

ICC:1:50-1:200

IHC:1:50-1:200

FC:1:50-1:100

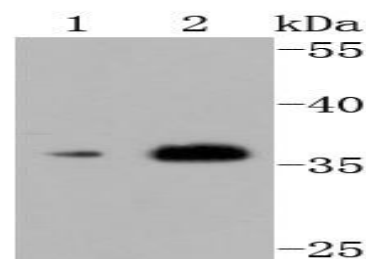
Storage&Stability:

Store at +4 °C after thawing. Aliquot store at -20 °C or -80 °C. Avoid repeated freeze / thaw cycles.

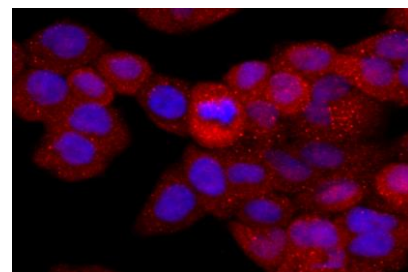
Specificity:

CD40L polyclonal antibody detects endogenous levels of CD40L protein.

DATA:



Western blot analysis of CD40L on different cells lysates using anti-CD40L antibody at 1/500 dilution. Positive control: Lane 1: HeLa
Lane 2: Mouse liver



ICC staining CD40L in HeLa cells (red). The nuclear counter stain is DAPI (blue). Cells were fixed in paraformaldehyde, permeabilized with 0.25% Triton X100/PBS.

Note:

For research use only, not for use in diagnostic procedure.

Bioworld Technology, Inc.

Add: 1660 South Highway 100, Suite 500 St. Louis Park, MN 55416, USA.

Email: info@bioworld.com

Tel: 6123263284

Fax: 6122933841

Bioworld technology, co. Ltd.

Add: No 9, weidi road Qixia District Nanjing, 210046, P. R. China.

Email: info@biogot.com

Tel: 0086-025-68037686

Fax: 0086-025-68035151