

## CD62P polyclonal antibody

Catalog: BS90253

Host: Rabbit

Reactivity: Human

### BackGround:

Selectins, also designated CD62 antigens, comprise a family of carbohydrate-binding proteins involved in mediating cellular interactions with leukocytes. L-Selectin (also designated LECAM-1 or CD62L) is expressed on the majority of B and naive T cells and on most monocytes, neutrophils and eosinophils. L-Selectin interacts with specific carbohydrates expressed by activated endothelial cells. P-Selectin (also designated GMP-140 or CD62P), expressed on activated platelets and endothelial cells, and E-Selectin (also designated ELMA-1 or CD62E), expressed on endothelial cells, exhibit overlapping ligand specificities. Both recognize sialyl-Le (x) as a ligand and bind to specific carbohydrates on neutrophils and monocytes.

### Product:

Rabbit IgG, 1mg/ml in PBS with 0.02% sodium azide, 50% glycerol, pH7.2

### Molecular Weight:

100 kDa

### Swiss-Prot:

P16109(Human)

### Purification&Purity:

ProA affinity purified

### Applications:

WB:1:1,000-1:2,000

IHC:1:50-1:200

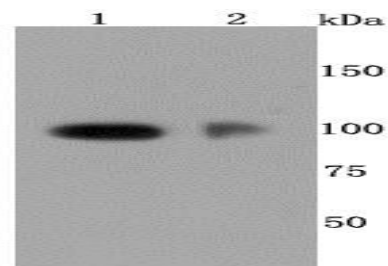
### Storage&Stability:

Store at +4 °C after thawing. Aliquot store at -20 °C or -80 °C. Avoid repeated freeze / thaw cycles.

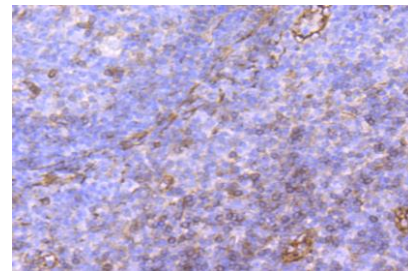
### Specificity:

CD62P polyclonal antibody detects endogenous levels of CD62P protein.

### DATA:



Western blot analysis of CD62P on different cells lysates using anti-CD62P antibody at 1/500 dilution. Positive control: Line1: HUVEC  
Line2: Human placenta



Immunohistochemical analysis of paraffin-embedded human tonsil tissue using anti-CD62P antibody. Counter stained with hematoxylin.

### Note:

For research use only, not for use in diagnostic procedure.

### Bioworld Technology, Inc.

Add: 1660 South Highway 100, Suite 500 St. Louis Park, MN 55416, USA.

Email: [info@bioworld.com](mailto:info@bioworld.com)

Tel: 6123263284

Fax: 6122933841

### Bioworld technology, co. Ltd.

Add: No 9, weidi road Qixia District Nanjing, 210046, P. R. China.

Email: [info@biogot.com](mailto:info@biogot.com)

Tel: 0086-025-68037686

Fax: 0086-025-68035151