

Cdc25C polyclonal antibody

Catalog: BS90268

Host: Rabbit

Reactivity: Human, Mouse, Rat

BackGround:

Cell cycle events are regulated by the sequential activation and deactivation of cyclin-dependent kinases (Cdks), including Cdk2 and Cdc2. Cdk2 in complexes with cyclin E and cyclin A appears necessary for the onset and progression of DNA replication, while the Cdc2 kinase in complexes with cyclin A or cyclin B is required for the initiation of cell division. Wee 1 has been identified as a protein kinase that suppresses the entry into mitosis by mediating inhibiting tyrosine phosphorylation of Cdc2 p34. In contrast, members of the Cdc25 family of protein phosphatases function as mitotic activators by dephosphorylation of Cdc2 p34 on regulatory tyrosine and possibly threonine residues. The Cdc25 gene family consists of at least three members that share approximately 40% identity in their most conserved carboxy-terminal sequences.

Product:

Rabbit IgG, 1mg/ml in PBS with 0.02% sodium azide, 50% glycerol, pH7.2

Molecular Weight:

53 kDa

Swiss-Prot:

P30307(Human) P48967(Mouse) Unigene:162298(Rat)

Purification&Purity:

Peptide affinity purified.

Applications:

WB:1:500-1:1,000

ICC:1:500-1:2,000

IHC:1:50-1:200

FC:1:50-1:100

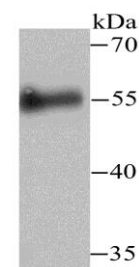
Storage&Stability:

Store at +4 °C after thawing. Aliquot store at -20 °C or -80 °C. Avoid repeated freeze / thaw cycles.

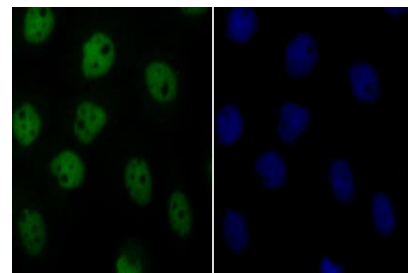
Specificity:

Cdc25C polyclonal antibody detects endogenous levels of Cdc25C protein.

DATA:



Western blot analysis of Cdc25C on human skin tissue lysate using anti-Cdc25C antibody at 1/500 dilution.



ICC staining Cdc25C in A431 cells (green). The nuclear counter stain is DAPI (blue). Cells were fixed in paraformaldehyde, permeabilised with 0.25% Triton X100/PBS.

Note:

For research use only, not for use in diagnostic procedure.

Bioworld Technology, Inc.

Add: 1660 South Highway 100, Suite 500 St. Louis Park, MN 55416, USA.

Email: info@bioworld.com

Tel: 6123263284

Fax: 6122933841

Bioworld technology, co. Ltd.

Add: No 9, weidi road Qixia District Nanjing, 210046, P. R. China.

Email: info@biogot.com

Tel: 0086-025-68037686

Fax: 0086-025-68035151