

**CDC42EP1 polyclonal antibody**

Catalog: BS90274

Host: Rabbit

Reactivity: Human

**BackGround:**

MSE55 also known as Borg5 or binder of Rho GTPases 5 is a Cdc42 effector protein that induces long cellular extensions in fibroblasts. MSE55 also increases and mediates actin cytoskeleton reorganization at the plasma membrane. MSE55 is a nonkinase CRIB (Cdc42/Rac interactive-binding) domain-containing molecule. An intact CRIB domain is required for the GTP-dependent binding of MSE55 to Cdc42. MSE55 is expressed in a tissue-specific manner in endothelial and bone marrow stromal cells. MSE55 may have a functional role in hematopoiesis or as a negative regulator of Rho GTPase signaling.

**Product:**

Rabbit IgG, 1mg/ml in PBS with 0.02% sodium azide, 50% glycerol, pH7.2

**Molecular Weight:**

60 kDa

**Swiss-Prot:**

Q00587(Human)

**Purification&Purity:**

ProA affinity purified

**Applications:**

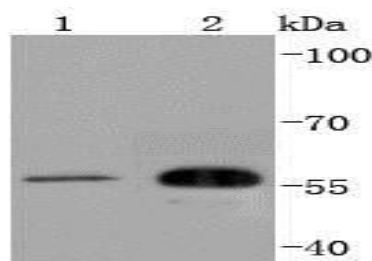
WB:1:1,000-1:2,000

**Storage&Stability:**

Store at +4 °C after thawing. Aliquot store at -20 °C or -80 °C. Avoid repeated freeze / thaw cycles.

**Specificity:**

CDC42EP1 polyclonal antibody detects endogenous levels of CDC42EP1 protein.

**DATA:**

Western blot analysis of CDC42EP1 on different lysates using anti-CDC42EP1 antibody at 1/1,000 dilution. Positive control: Lane 1: HUVEC Lane 2: HeLa

**Note:**

For research use only, not for use in diagnostic procedure.

**Bioworld Technology, Inc.**

Add: 1660 South Highway 100, Suite 500 St. Louis Park, MN 55416, USA.

Email: [info@bioworld.com](mailto:info@bioworld.com)

Tel: 6123263284

Fax: 6122933841

**Bioworld technology, co. Ltd.**

Add: No 9, weidi road Qixia District Nanjing, 210046, P. R. China.

Email: [info@biogot.com](mailto:info@biogot.com)

Tel: 0086-025-68037686

Fax: 0086-025-68035151