

## CDC5L polyclonal antibody

Catalog: BS90276

Host: Rabbit

Reactivity: Human, Mouse, Rat

### BackGround:

Cdc5L (Cell division cycle 5-like protein, Pombe Cdc5-related protein) is a DNA-binding protein encoded by the human gene CDC5L. Cdc5L contains 2 HTH myb-type DNA-binding domains and may shuttle between cytoplasm and nucleus. It is involved in cell cycle control and may act as a transcription activator. CDC5L is a spliceosomal protein that is highly conserved across species. It is a member of a protein group that comprise the core of spliceosomal complexes and are essential for pre-mRNA splicing. Cdc5L is involved in the second catalytic step of pre-mRNA splicing, which involves cleavage at the 3' splice site and the ligation of the exons. This process releases the intact intron lariat. A chromosomal aberration involving Cdc5L is found in multicystic renal dysplasia. This aberration is caused by a translocation with USF-2.

### Product:

Rabbit IgG, 1mg/ml in PBS with 0.02% sodium azide, 50% glycerol, pH7.2

### Molecular Weight:

92/100 kDa

### Swiss-Prot:

Q99459(Human) Q6A068(Mouse) O08837(Rat)

### Purification&Purity:

ProA affinity purified

### Applications:

WB:1:1,000

ICC:1:50-1:200

IHC:1:50-1:200

### Storage&Stability:

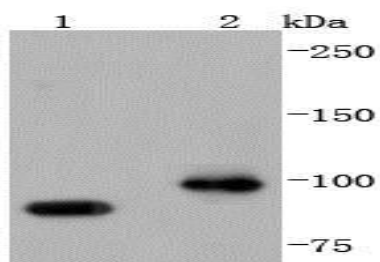
Store at +4 °C after thawing. Aliquot store at -20 °C or

-80 °C. Avoid repeated freeze / thaw cycles.

### Specificity:

CDC5L polyclonal antibody detects endogenous levels of CDC5L protein.

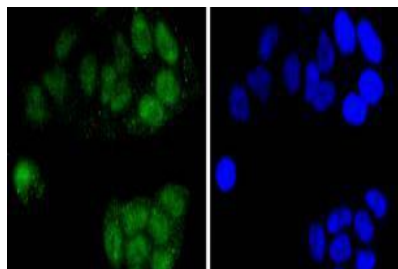
### DATA:



Western blot analysis of CDC5L on different lysates using anti-CDC5L antibody at 1/1,000 dilution. Positive control:

Lane 1: HeLa

Lane 2: Jurkat



ICC staining CDC5L in HeLa cells (green). The nuclear counter stain is DAPI (blue). Cells were fixed in paraformaldehyde, permeabilised with 0.25% Triton X100/PBS.

### Note:

For research use only, not for use in diagnostic procedure.

### Bioworld Technology, Inc.

Add: 1660 South Highway 100, Suite 500 St. Louis Park, MN 55416, USA.

Email: [info@bioworld.com](mailto:info@bioworld.com)

Tel: 6123263284

Fax: 6122933841

### Bioworld technology, co. Ltd.

Add: No 9, weidi road Qixia District Nanjing, 210046, P. R. China.

Email: [info@biogot.com](mailto:info@biogot.com)

Tel: 0086-025-68037686

Fax: 0086-025-68035151