

CDC7 Kinase polyclonal antibody

Catalog: BS90277

Host: Rabbit

Reactivity: Human, Mouse, Rat

Background:

The Dbf4/Cdc7 protein kinase is essential for the activation of replication origins during S phase. Cdc7/Dbf4 efficiently phosphorylates several proteins that are required for the initiation of DNA replication, including five of the six minichromosome maintenance (Mcm) proteins and the p180 subunit of DNA polymerase α -primase. This protein complex consists of the catalytic subunit Cdc7 associating with the regulatory and activating subunit Dbf4. The kinase activity of the complex is regulated throughout the cell cycle, mainly by fluctuating levels of Dbf4. Cdc7 is consistently expressed throughout the cell cycle, while the expression of Dbf4 is absent during G1 phase and accumulates during S and G2 phases. The anaphase-promoting complex rapidly degrades Dbf4 at the time of chromosome segregation, and the stability of Dbf4 remains low during pre-Start G1 phase. The coordinated degradation of Dbf4 and the time of chromosome separation is important to ensuring that prereplicative complexes, which assemble after chromosome segregation, do not immediately re-fire.

Product:

Rabbit IgG, 1mg/ml in PBS with 0.02% sodium azide, 50% glycerol, pH7.2

Molecular Weight:

64 kDa

Swiss-Prot:

O00311(Human) Q9Z0H0(Mouse) Unigene:20842(Rat)

Purification&Purity:

ProA affinity purified

Applications:

WB:1:1,000-1:5,000

FC:1:50-1:100

Storage&Stability:

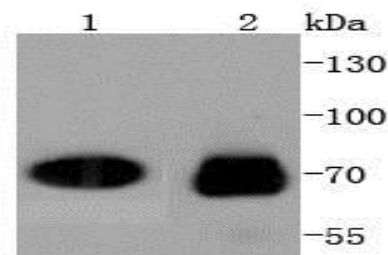
Store at +4 °C after thawing. Aliquot store at -20 °C or

-80 °C. Avoid repeated freeze / thaw cycles.

Specificity:

CDC7 Kinase polyclonal antibody detects endogenous levels of CDC7 Kinase protein.

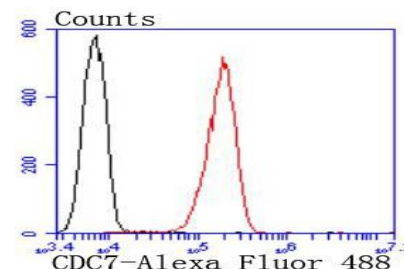
DATA:



Western blot analysis of CDC7 Kinase on different lysates using anti-CDC7 antibody at 1/1,000 dilution. Positive control:

Lane 1: Jurkat

Lane 2: HeLa



Flow cytometric analysis of A431 cells with CDC7 Kinase antibody at 1/50 dilution (red) compared with an unlabelled control (cells without incubation with primary antibody; black). Alexa Fluor 488-conjugated goat anti rabbit IgG was used as the secondary antibody.

Note:

For research use only, not for use in diagnostic procedure.

Bioworld Technology, Inc.

Add: 1660 South Highway 100, Suite 500 St. Louis Park, MN 55416, USA.

Email: info@bioworld.com

Tel: 6123263284

Fax: 6122933841

Bioworld technology, co. Ltd.

Add: No 9, weidi road Qixia District Nanjing, 210046, P. R. China.

Email: info@biogol.com

Tel: 0086-025-68037686

Fax: 0086-025-68035151