

## Cdk6 polyclonal antibody

Catalog: BS90284

Host: Rabbit

Reactivity: Human

### BackGround:

Cell cycle progression is controlled in part by a family of cyclin proteins and cyclin dependent kinases (Cdks). Cdk proteins work in concert with the cyclins to phosphorylate key substrates involved in each phase of cell cycle progression. Another family of proteins, Cdk inhibitors, also plays a role in regulating the cell cycle by binding to cyclin-Cdk complexes and modulating their activity. Several Cdk proteins have been identified, including Cdk2-Cdk8, PCTAIRE-1-PCTAIRE-3, PITALRE and PITSLRE. Cdk6 is known to associate with cyclins D1, D2 and D3 and to be involved with the G1/S transition of the cell cycle. Multiple inhibitors of Cdk6 have been identified, including p18 and p19. These inhibitors bind to both free and complexed Cdk6, and they inhibit the activity of the cyclin D-bound Cdk6.

### Product:

Rabbit IgG, 1mg/ml in PBS with 0.02% sodium azide, 50% glycerol, pH7.2

### Molecular Weight:

37 kDa

### Swiss-Prot:

Q00534(Human)

### Purification&Purity:

ProA affinity purified

### Applications:

WB:1:1,000-1:2,000

ICC:1:50-1:200

IHC:1:50-1:200

FC:1:50-1:100

### Storage&Stability:

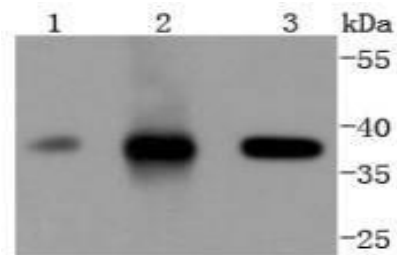
Store at +4 °C after thawing. Aliquot store at -20 °C or

-80 °C. Avoid repeated freeze / thaw cycles.

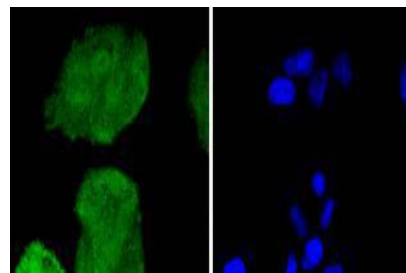
### Specificity:

Cdk6 polyclonal antibody detects endogenous levels of Cdk6 protein.

### DATA:



Western blot analysis of Cdk6 on different lysates using anti-Cdk6 antibody at 1/1,000 dilution. Positive control: Lane 1: Jurkat Lane 2: K562 Lane 3: HeLa



ICC staining Cdk6 in HeLa cells (green). The nuclear counter stain is DAPI (blue). Cells were fixed in paraformaldehyde, permeabilised with 0.25% Triton X100/PBS.

### Note:

For research use only, not for use in diagnostic procedure.

### Bioworld Technology, Inc.

Add: 1660 South Highway 100, Suite 500 St. Louis Park, MN 55416, USA.

Email: [info@bioworld.com](mailto:info@bioworld.com)

Tel: 6123263284

Fax: 6122933841

### Bioworld technology, co. Ltd.

Add: No 9, weidi road Qixia District Nanjing, 210046, P. R. China.

Email: [info@biogot.com](mailto:info@biogot.com)

Tel: 0086-025-68037686

Fax: 0086-025-68035151