

Cdk8 polyclonal antibody

Catalog: BS90286

Host: Rabbit

Reactivity: Human, Mouse, Rat

BackGround:

Cell cycle progression is controlled in part by a family of cyclin proteins and cyclin dependent kinases (Cdks). Cdk proteins work in concert with the cyclins to phosphorylate key substrates involved in each phase of cell cycle progression. Another family of proteins, Cdk inhibitors, also plays a role in regulating cell cycle by binding to cyclin-Cdk complexes and modulating their activity. Several Cdk proteins have been identified, including Cdk2-Cdk8, PCTAIRE-1-3, PITALRE and PITSLRE. Large complexes containing Cdk8, cyclin C and the large subunit of RNA polymerase II have been identified. Cdk8 is thought to regulate RNA polymerase II function in conjunction with cyclin C. Cdk8 has been demonstrated to function as a transcriptional activator when fused to the DNA binding domain of GAL4.

Product:

Rabbit IgG, 1mg/ml in PBS with 0.02% sodium azide, 50% glycerol, pH7.2

Molecular Weight:

53 kDa

Swiss-Prot:

P49336(Human) Q8R3L8(Mouse)

Purification&Purity:

ProA affinity purified

Applications:

WB:1:1,000-1:2,000

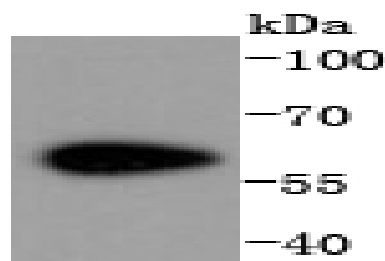
Storage&Stability:

Store at +4 °C after thawing. Aliquot store at -20 °C or -80 °C. Avoid repeated freeze / thaw cycles.

Specificity:

Cdk8 polyclonal antibody detects endogenous levels of Cdk8 protein.

DATA:



Western blot analysis of Cdk8 on NIH/3T3 cells lysates using anti-Cdk8 antibody at 1/1,000 dilution.

Note:

For research use only, not for use in diagnostic procedure.

Bioworld Technology, Inc.

Add: 1660 South Highway 100, Suite 500 St. Louis Park, MN 55416, USA.

Email: info@bioworld.com

Tel: 6123263284

Fax: 6122933841

Bioworld technology, co. Ltd.

Add: No 9, weidi road Qixia District Nanjing, 210046, P. R. China.

Email: info@biogot.com

Tel: 0086-025-68037686

Fax: 0086-025-68035151