

Cdk9 polyclonal antibody

Catalog: BS90287

Host: Rabbit

Reactivity: Human

BackGround:

A family of proteins designated cyclin dependent kinases (Cdks) are critical regulators of cell cycle progression. Cdk family members, including Cdc2 p34, Cdk1-9, PISSLRE, KKIALRE, PITSLRE, and PCTAIRE 1-3 are constitutively expressed throughout the cell cycle. Cdc2 p34 activity peaks during mitosis and Cdk2 activity rises in late G1 or early S phase. Cdk4 and Cdk6 are critically involved in G1 to S phase progression. The functions of Cdk3, Cdk5b, PISSLRE, KKIALRE and PCTAIRE 1-3 are less well defined. Cdk9 (also designated PITALRE) has been shown to specifically phosphorylate the retinoblastoma protein. The more recently cloned Drosophila protein, P-TEFb, is thought to be the homolog of mammalian PITALRE. P-TEFb has been shown to be required for HIV Tat transcriptional activation.

Product:

Rabbit IgG, 1mg/ml in PBS with 0.02% sodium azide, 50% glycerol, pH7.2

Molecular Weight:

43/37 kDa

Swiss-Prot:

P50750(Human)

Purification&Purity:

ProA affinity purified

Applications:

WB:1:1,000

ICC:1:50-1:200

IHC:1:50-1:200

Storage&Stability:

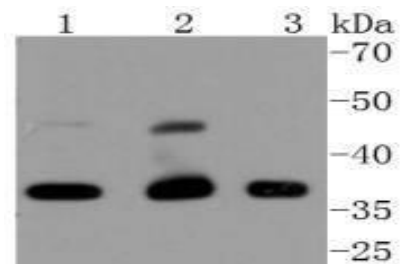
Store at +4 °C after thawing. Aliquot store at -20 °C or

-80 °C. Avoid repeated freeze / thaw cycles.

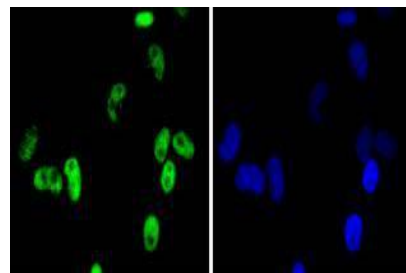
Specificity:

Cdk9 polyclonal antibody detects endogenous levels of Cdk9 protein.

DATA:



Western blot analysis of Cdk9 on different lysates using anti-Cdk9 antibody at 1/1,000 dilution. Positive control: Lane 1: HeLa Lane 2: Jurkat Lane 3: A431



ICC staining Cdk9 in HeLa cells (green). The nuclear counter stain is DAPI (blue). Cells were fixed in paraformaldehyde, permeabilised with 0.25% Triton X100/PBS.

Note:

For research use only, not for use in diagnostic procedure.

Bioworld Technology, Inc.

Add: 1660 South Highway 100, Suite 500 St. Louis Park, MN 55416, USA.

Email: info@bioworld.com

Tel: 6123263284

Fax: 6122933841

Bioworld technology, co. Ltd.

Add: No 9, weidi road Qixia District Nanjing, 210046, P. R. China.

Email: info@biogot.com

Tel: 0086-025-68037686

Fax: 0086-025-68035151